



Hot Gas Bypass

Advancing HVAC&R to serve humanity and promote a sustainable world

September 2010

President's Message

Anchorage Meeting Information

Date: Thursday, August 16, 2010

Location:

Westmark, 720 W 5th Ave.
Anchorage, AK 99502

Social: 5:30 p.m.

Dinner: 6:00 p.m.

Program: 7:00 p.m.

"Biomass Heating Systems"

Presented by:

Louis Zizza, PE, LEED AP

Members: \$25.00

Students: \$10.00

Alaska Chapter Officers/Chairs

Ruth Armstrong, President

ruth@akwinter.com

Jessi Cherry, Vice-President

jessi.cherry@msicontrols.com

Blake Acton, Secretary

bacton@victaulic.com

Randy Williams, Treasurer

rwll@amc-engineers.com

Eric Persson, Nominating Commit. Chair

epersson@msicontrols.com

Troy Nibert, Membership

tnibert@proctorsales.com

Jeff Hurd, Technology Transfer

Jeff.hurd@awvu.biz

Jim Christian, Resource Promotion

jchristian@udelhoven.com

Keith Reed, Historian

kreed@ssialaska.com

Ladies and Gentlemen, welcome back to another exciting year of ASHRAE.

We didn't have much of a summer this year, but on a happier note, we did not have to water the lawn much this summer. Mother Nature pretty much had that covered for the entire months of July and August.

I am really looking forward to the 2010 - 2011 ASHRAE year. We have a number of great speakers lined up already thanks to the efforts of our new vice president for this year, Jessi Cherry.

As many of you already know, we elected our new board members last April and I would like to congratulate and welcome all of the board members to their new positions: Jessi Cherry - Vice President, Blake Acton - Secretary, Randy Williams - Treasurer. As your new President it is my honor to thank **Jim Christian** for his outstanding volunteer efforts on his way "through the chairs". Under Jim's leadership our chapter received the "Top Dog Award" at this year's CRC. Way to go Jimmy!!! Also receiving an award at the CRC was our own **Jessi Cherry** who was awarded the J. Donald Kroeker award for the Best-of-the-region newsletter for her efforts. Jessi completely revamped our newsletter last year and her hard work and professionalism certainly showed. As this year's Vice President, Jessi will be focusing her talents on putting

together our program schedule. Blake Acton will be taking over the Hot Gas Bypass newsletter editor in chief position as well as a number of other distinguished responsibilities as our Chapter Secretary. Last but not least, our newest board member, Randy Williams will be taking over the position of Treasurer.

We will again be meeting at the Westmark downtown. We have been able to keep our member meeting costs down to \$25 for the past 6-7 years that I can remember, however, with the ever increasing costs, we are forced this year to raise our member meeting costs to \$30. The cost of meals has gone up significantly over the past couple of years and it is with a heavy heart that I have to announce this increase. We checked around at a number of other venues for an alternate plan, but the cost at other venues was significantly higher still than what was offered by Westmark.

I would also like to take a moment to recognize our new ASHREA Society President, Lynn G. Bellanger, P.E. and her theme for this year, "Modeling a Sustainable World". A few of Lynn's highlights are: First female president of ASHRAE in its 116 year history (*it's about time*), Fellow ASHRAE, she is a partner with Pathfinder Engineers and Architects LLP in Rochester, NY, she is also ASHRAE certified as a Building Energy Modeling Professional and a High Performance Building

Design Professional.

Our speaker this month is one of our own members, Mr. Louis Zizza of Coffman Engineers. He will be giving us a presentation on "Biomass Heating Systems". This promises to be a very interesting and educational opportunity. Please see the September Meeting Announcement for more information.

Finally on a personal note, I hope that I can do as great a job as your President as our Past President and current RP Chairperson, Jim Christian. I know that I have some awfully big shoes to fill and hope that I am up to the challenge. I look forward to working diligently with all of our BOG Members and Chairpersons to ensure a great ASHRAE year for all our members and associates. I look forward to seeing all of you at the meeting on September 16th at 5:30 for the social hour.

Quote of the Month:

"Every great dream begins with a dreamer. Always remember, you have within you the strength, the patience, and the passion to reach for the stars to change the world."
Anonymous

Sincerely,
Ruth Armstrong
President
ASHRAE Alaska Chapter
907-248-0000
ruth@akwinter.com



September 2010 Program



installation, and operation of a facility of this nature. Louis will include information regarding the Forest Service's role in biomass boiler assessments and installations.

Louis has 15 years of diverse experience as a mechanical engineer. He has a strong background in project management, and mechanical design. His experience includes coal and gas-fired power plant systems, aircraft hydrant fueling systems, machine design, HVAC, and piping systems. He has been involved in a wide range of projects that have included power plants, military projects, commercial, and industrial facilities work. In addition, Louis has completed studies in the design and operation of power plant baghouses and air-cooled condensers in cold regions. Louis has been a LEED® Accredited Professional for over five years.

We will be meeting at the WestMark Hotel on 5th Avenue in downtown Anchorage on Thursday, September 16th. I hope to see you there.

"Biomass Heating Systems"

Presented by:

Louis Zizza, PE, LEED AP

Louis Zizza, with Coffman Engineers, will be presenting on Biomass (wood chip) boiler use, operation, and feasibility in Alaska. Biomass boilers burn waste wood (or wood pellets) to create heat for schools, municipal buildings, and commercial buildings throughout Alaska. A feasibility assessment of the site, building, and resources allows for the identification of economical sites and the decision as to whether this technology is economically feasible for the particular location. There are many different aspects to the analysis,

Networking: 5:30

Dinner and Meeting: 6:00

Presentation: 7:00

Please RSVP no later than Tuesday, September 14, 2010 at noon. **If you RSVP your cost will be \$30.00. If you do not, your cost will be \$35.00 at the door. If you RSVP, and do not show up, you will be charged \$35.00.** We have to cover cost and RSVP's are very important. If you RSVP for this event, and find that you cannot attend, let me know as soon as possible and we will try to work with you.

Please RSVP to

Jessi Cherry

Vice President – Programs

jcherry@msicontrols.com
[m](#)



Don't forget to follow ASHRAE on your favorite media networks:





Research Promotion

ASHRAE
Research



Today's Challenges
Tomorrow's Solutions

Hello everyone.

This starts a new year of ASHRAE Research Promotion. I am the RP Chair for the year and will be contacting many of you in regards to giving to this effort. To avoid a pestering phone call give sooner rather than later. Our goal this year is the same as last year. It is \$9 000.

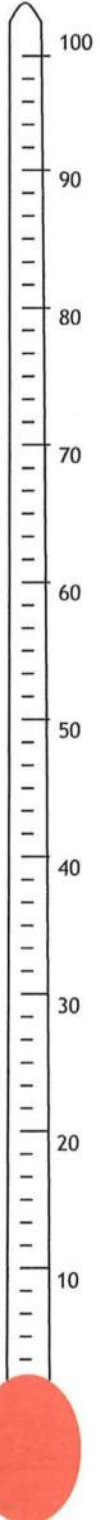
Congratulations to last year's chair, Russ Peters, for exceeding goal and reaching full circle. Our final tally was \$11 236.

In order to reach the same goals this year we will need everyone's help. Officers need to donate prior to November 15, in order to obtain full circle.

Finally, if you renew your membership on-line. You can easily make your RP dona-

2010-2011 Research Investors, Alaska Chapter ASHRAE

<u>Organizations</u>	<u>Individuals</u>	<u>Individuals</u>
\$1000 & Over	\$1000 & Over	\$100—\$249
\$500—\$999	\$250—\$999	
\$150—\$499		



Goal:
\$9000



Related News



Building a Greener Tomorrow, Today

The ASHRAE Learning Institute (ALI) is bringing *Standard 189.1-2009* training to a city near you.

The following is a listing of *Standard 189.1-2009* courses and seminars currently scheduled and open for registration.

Upcoming *Standard 189.1-2009* Seminars and Courses

Date	Title	Location	Registration
Jan. 31, 2011	Implementing <i>Standard 189.1-2009</i> for High-Performance Green Buildings	Las Vegas Convention Center 3150 Paradise Road Las Vegas, NV 89109 2:30 p.m. - 5:30 p.m.	Seats are limited Register Today

<u>Position</u>	<u>Name</u>	<u>E-mail</u>
Director & Region Chair	Erich Binder	erich.binder@worleyparsons.com
Assistant Regional Chair	Traci Hanegan	hanegan@coffman.com
Nominating Committee Member	Kevin Marple	kmarple@benzco.com
Nominating Committee Member	Norm Grusnick	ngrsnick@ecomfg.com
CTTC RVC	Eileen Jensen	nejensen@bpa.gov
Student RVC	Douglas LeCren	douglas.lecren@nanworleyparsons.com
Membership RVC	Russell Lavitt	rlavitt@smseng.com
Research Promotion RVC	Ray Sieber	sieber@src.sk.ca
Regional Historian	Tim McGinn	mcginnt@cohos-evamy.com
Regional Treasurer	Rob Craddock	rob@inlandmetal.ca
Regional Web Master	Kathy Habke	chapter.administrator@sac-ashrae.com
CRC 2010 Chair	Jerry Belanger	jclan@sasktel.net



2010 YEA Leadership Weekend

The registration form and the schedule of events is on the YEA website:

www.ashrae.org/yea.

Registration closes

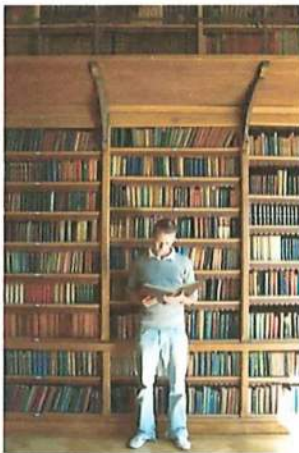
September 10th and the fee covers everything except for the plane ticket. This year our facilitator is Barry Benator, an ASHRAE member who owns Benatech www.benatech.com.

Each attendee will take the Myers-Briggs Type Indicator assessment prior to the weekend, and Barry will use the results as he leads them in individual and group exercises.

There will also be a tour of the recently renovated ASHARE Headquarters building, led by Mike Vaughn, Manager of Research and Technical Services.



ASHRAE Student Chapter Report



Design class.

Student attendance at our local chapter monthly meetings has been very low, even with the reduced student fee of \$10. In the past we have had companies step forward and sponsor students so they can attend chapter meetings for free. To help encourage students to come out to meetings more I would like to startup a student sponsorship program once again. If you or your company would like to help with the sponsorship of students so that they could attend our meetings for free, please contact me.

The leaves are turning, school is back in session, and the UAA student chapter is up and running. Their first meeting of the year is scheduled for October 7th. Katharine Keith from the Mat-Su campus is coming to speak about their new Renewable Energy Certificate Program. Also, on September 16th, Siemens will be giving a presentation to the UAA Mechanical Engineering Department's senior HVAC

The UAA student chapter is always looking for presenters for their meetings. Our goal is to give the students a picture of the opportunities out there for new engineers. Anyone interested in doing

a presentation about your business, engineering, being involved with ASHRAE, mechanical system design and technology, or other related topics please contact me. Meetings are held 11:30 - 12:30 PM the first Thursday of every month in room 103 of the Alaska Native Science & Engineering Program (ANSEP) building on the UAA campus.

Presenting at the meetings also gives you an opportunity to meet new talent in the local area, while giving students an opportunity to explore different career opportunities in the engineering field.

Sincerely,
Michael D. Anderson
Student Activities
907.563.2242
mikeanderson@siemens.com

“ If you think your teacher is tough, wait until you get a boss... They don't have tenure”

-Bill Gates



Membership Report

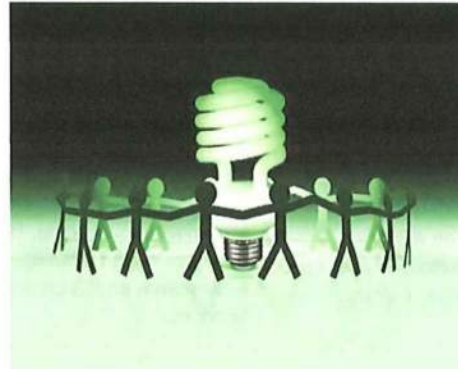
Many of you may already know but Jason Patterson has moved to Portland OR. and I have taken over the Membership Promotion Chair. We are starting this year off with 7 new members,

- Kristan Meyers
- Christopher Hodgin
- Jay Van Alstine
- Eric Franklin
- Kelvin Goode
- Colin Fay
- Brad Barbo

Currently there are 18 un-

paid members so check your renewal date and get your memberships up to date. Looking forward to our first meeting of this session. Any questions or concerns regarding membership please do not hesitate to contact me.

Troy Nibert



Articles from ASHRAE's Public Relations Office

ASHRAE Design Competition Gives Students Hands-On Experience in Practical Design

ATLANTA—Engineering practices such as BIM, geothermal and combined cooling, heating and power are highlighted in the winning entries in the 2010 ASHRAE Student Design Competition

This year's Student Design Competition featured a mock design of the Ginsburg Tower at Florida Hospital in Orlando, Fla. This structure, the tallest hospital building in the state, is a 15-story patient tower that contains the Florida Hospital Cardiovascular Institute, 440 patient beds and one of the largest emergency departments in the country. Among the 31 entries from around the world, three in particular stood out as first place winners in the three categories that the Competition offers.

First place in HVAC System Design is awarded to Nathaniel Boyd, Michael Angell, Justin Wiese, Edward Gillett and Trong Duc Nguyen, of University of Central Florida, Orlando, Fla. Their faculty

advisor is Marcel Ilie, Ph.D.

After constructing a complete building information model (BIM), the students chose a constant volume air-handling unit as the primary air source and latent load control, and onsite combined cooling, heating and power (CCHP) plant based on a bank of micro-turbines fueled by natural gas.

These HVAC systems eliminate nosocomial infections via proper ventilation directional control and would provide uninterrupted HVAC service to hospital occupants, even during natural disasters, as well as reduction of environmental and economic impact of the HVAC design.

First place in HVAC System Selection is awarded to Matt Kolins, Joel Wheeler, Nicole Vogt, Jared Palan, Todd Kuno and Zac Buckmiller, of Kansas State University, Manhattan, Kan. Their faculty advisors are Fred Hasler, P.E. and Julia Keen, P.E.

The students selected a combination of air handling units with patient room heat pumps, chillers and cooling

towers and shell-and-tube heat exchangers. Additionally a geothermal loop in Lake Estelle, adjacent to the hospital, acts as a heat sink. Not only is the system environmentally conscious, but also has the best return on investment.

First place in Integrated Sustainable Building Design is awarded to Ryland Phelps, Carolyn Lamb and Amy Rose Keyzer, of Lawrence Technological University, Southfield, Mich. Their advisors are Daniel Faoro and Janice Means.

The students set out to design a sustainable and energy efficient building without sacrificing visual appeal, while responding to climate conditions and surrounding buildings and forms.

They were able to achieve this by using water reducing fixtures in all bathrooms, supplying alternative energy

CONTINUED ON NEXT PAGE

If you would like a copy of any of these articles please contact Blake Acton, Secretary, at bacton@victaulic.com

If you would like a copy of any of these articles please contact Blake Acton, Secretary, at bacton@victaulic.com.



Articles from ASHRAE's Public Relations Office

through photovoltaic panels and architectural fabric, using geothermal wells and evacuated tubes to reduce loads on mechanical equipment and implementing a daylighting system to reduce lighting loads and bring daylight into the building.

The first place teams are given 10-15 minutes to present their projects at the 2011 Winter Conference in Las Vegas, Nev., Jan 29-Feb. 2.

ASHRAE, founded in 1894, is an international organization of some 50,000 persons. ASHRAE fulfills its mission of advancing heating, ventilation, air conditioning and refrigeration to serve humanity and promote a sustainable world through research, standards writing, publishing and continuing education.

**ASHRAE '11
ASHRAE holds all the
sustainability cards, Winter
Conference to be held in Las
Vegas**

ATLANTA—Las Vegas, Nev. continues to build upon its reputation as a vibrant showcase for the extraordinary by offering the grandest hotels, the biggest stars in entertainment and, of course, the brightest lights. It's no wonder that the world's biggest HVAC Expo and the largest membership-based HVAC&R engineering society have chosen the city as the site of the ASHRAE 2011 Winter Conference and AHR Expo.

The extravagant setting of Las Vegas serves as a unique contrast to ASHRAE's Winter Conference theme of A Safe Bet: Zero-Energy Design. It is sure to highlight the importance of finding the balance in design. The 2011 Winter Conference takes place January 29-February 2 at the

Las Vegas Hilton. The International Air-Conditioning, Heating, Refrigerating Expo®, held in conjunction with the Winter Conference, will run January 31-February 2. The Expo is held at the Las Vegas Convention Center, a short distance from the Hilton, the Conference headquarters hotel.

In keeping with ASHRAE's goal of continuing education the Conference offers over 200 Professional Development Credits, as well as Continuing Education Units, which can be applied toward a Professional Engineering license.

The technical program features more than 90 programs and 300 speakers addressing the efficient use of energy in new and existing buildings, refrigeration updates, applications including data centers, laboratories, healthcare facilities, the real cost of zero-energy design and other topics related to design, standards, codes and professional skills. Nearly all of the technical program sessions will be approved for NY PDHs and by USGBC for GBCI CE hours for LEED professionals. The Las Vegas Virtual Conference, included with paid attendees' registrations, will be available to non-attendees.

Six Professional Development Seminars and 14 Short Courses are offered to help industry professionals stay up-to-date on industry trends. ALI offers a new course on building energy modeling that focuses on HVAC&R systems and updates to courses covering Standards 62.1 and 90.1 to reflect changes in the 2010 versions of these standards from previous versions.

Additionally, ASHRAE continues to listen to the market and launches a sixth certification program in conjunction with the 2011 Winter Conference. This new program targets Energy Assessors/Energy Auditors and is appropriate for those individuals who perform energy assessments or audits

for commercial, industrial or residential buildings. More information can be found at www.ashrae.org/certification.

This winter's technical tours spotlight how technology developed by ASHRAE members is practically applied to buildings and include the central plant at Planet Hollywood and MGM Center and Springs Preserve.

When members are not attending courses at the Conference, observing the technological advancements featured at the AHR Expo or touring the local sustainable buildings there are numerous general tours such as Hoover Dam, Springs Preserve, the Venetian Grand Canal Shoppes, the Bodies and Titanic exhibits and the Las Vegas Strip.

Those who take part in the early-bird registration before December 31 have the opportunity to save up to \$195. Complete information is available at www.ashrae.org/lasvegas.

ASHRAE, founded in 1894, is an international organization of some 50,000 persons. ASHRAE fulfills its mission of advancing heating, ventilation, air conditioning and refrigeration to serve humanity and promote a sustainable world through research, standards writing, publishing and continuing education.



If you would like a copy of any of these articles please contact Blake Acton, Secretary, at bacton@victaulic.com



Historian Report

ASHRAE Webcasts

ASHRAE Webcast



**Ground Source Heat Pump Systems -
Putting the Earth to Work for You**
April 21, 2011
1:00-4:00 P.M. EDT

Sponsored by:



Hear from leading heat pump experts how site, climate, building, HVAC system and ground characteristics affect ground heat exchanger design, how ground source system design enhances efficiency, and how to avoid design and operations pitfalls.

This [free](#) webcast is brought to you by the Chapter Technology Transfer Committee and sponsored by [ClimateMaster](#), [Mammoth](#), and [Taco](#).



ASHRAE Alaska Chapter would like to Thank our Business Support

 <p>Alaska's Premiere Mechanical, Electrical, Plumbing and Telecommunications Engineering Firm Adams, Morgenthaler and Company, Inc. 701 East Tudor Road, Suite 250—Anchorage, AK 99503 Phone: 907-257-9100—Fax: 907-257-9191 www.amc-engineers.com— info@amc-engineers.com</p>	<p><i>Serving All of Alaska</i></p> <ul style="list-style-type: none"> • Filtration • Heating • Plumbing • Ventilation  <p>ALASKA WINTER, INC. MANUFACTURERS REPRESENTATIVE</p> <p>3901 Spenard Road Anchorage, Alaska 99517-3002 Phone: (907) 248-0000 Fax: (907) 243-3206 www.alwinter.com</p> <p>Ruth Armstrong Cell: (907) 230-0219 e-mail: ruth@alwinter.com</p>
<p>Russel "Rusty" West Alaska Sales Manager</p>  <p>Office: 425-774-6602 Direct Line: 425-977-2139 Mobile: 206-909-3664 Fax: 425-775-2272</p> <p>Email: rwest@coleindust.com</p> <p>5924 - 203rd Street Southwest • Lynnwood • WA • 98036 Serving the Pacific Northwest for over 40 years</p>	<p>"SERVING ALASKA SINCE 1957"</p>  <p>ARCHITECTS ENGINEERS SURVEYORS</p> <p>COLLEGE ROAD, FAIRBANKS, ALASKA 1.800.668.8919</p>
 <p>JAMES P. SHELDON CO., INC. HVAC Manufacturer Representative</p> <p>201 E 54th Ave., Suite 100, Anchorage, AK, 99518 Phone 561-4747 fax 562-7473 www.jpsheldon.com</p> <p>Andrew Lee Rick Loewen</p>	<p>Jeff Robinson <i>Service & Installation Division Manager</i> jrobinson@klebsheating.com</p> <p>907.365.2500 907.365.2540 www.klebsheating.com</p> <p>KLEBS Heating Plumbing Air Quality</p> <p>1107 E 72nd Avenue, Anchorage, Alaska 99518</p>
 <p>Featuring controls by: AUTOMATED LOGIC CORPORATION</p> <p>Jessi Cherry Sales Specialist Energy Management & Control Systems</p> <p>Phone: (907) 279-3320 Fax: (907) 279-2369 jessi.cherry@msicontrols.com</p>	<p>Roth-Sirianni, LLC</p> <p>8040 King Street Anchorage, AK 99518</p> <p>907-522-6699 • fax 907-522-1274</p> <p>Dennis F. Sirianni Manufacture's Representatives d.sirianni@alaska.com</p>
<p>R S A Engineering Inc. Mechanical and Electrical Consulting Engineers</p>  <p>Alaskan Owned, Alaskan Operated Since 1983</p>  <p>Eimendorf Fitness Center</p> <p>© 2007 Kevin G. Smith</p> <p>2522 Arctic Boulevard, Anchorage, AK 99503 (907) 276-0521 (907) 276-1751 fax 191 E. Swanson Avenue, Wasilla AK 99551 (907) 357-1521 (907) 357-1751 fax www.zsa-ak.com or info@rsa-ak.com</p>	<p>STINEBAUGH & COMPANY</p> <p>5730 B Street • Anchorage, AK 99518 phone: 907.345.8021 • fax: 907.345.8022 www.stinebaugh.com</p> <p>Engineered HVAC Solutions for Alaska</p>

This page will be continually updated. Please get your business card in for the year of 2010. Business cards run from January to January for \$100.00 per year.

Please send your photo-ready card to bacton@victaulic

Or if you would like to update your existing business card please contact Blake Acton.



ASHRAE Alaska Chapter would like to Thank our Business Support

 <p>UDELHOVEN Nick Pepperworth Vice President Mechanical Administrator Project Manager</p> <p>Oilfield System Services, Inc. 184 East 53rd Avenue Anchorage, Alaska 99518-1222 www.udelhoven.com Phone: 907-375-1561 Cell: 907-351-6114 Fax: 907-562-1880 Email: Npepperworth@udelhoven.com</p>	 <p>BLAKE ACTON</p> <p>3705 Arctic Blvd. #2429 Anchorage, AK 99503 Email: bacton@victaulic.com</p> <p>Cell: 907/223-0261 Fax: 907/865-2439 Customer Care: 800/742-5842</p>
---	--

This page will be continually updated. Please get your business card in for the year of 2010. Business cards run from January to January for \$100.00 per year.

Please send your photo-ready card to bacton@victaulic

Or if you would like to update your existing business card please contact Blake Acton.

ASHRAE Roster

A S H R A E - A L A S K A C H A P T E R

The Alaska ASHRAE Chapter is going to assemble a roster for all of our members and supporters. This will be an excellent reference for all in our community. The format for this roster will be an electronic .PDF file. We are looking for support from our rep firms, manufacturers, wholesalers, contractors, engineering firms, etc. We will support this effort with line cards throughout the roster. We appreciate your support.

- Full Page Line Cards: \$250
- Half Page Line Cards: \$200
- Quarter Page Line Cards: \$150
- Business Cards: \$100



For more information about placing a line card into the Roster contact:

Jessi Cherry, Vice-President at jessi.cherry@msicontrols.com



Until Next Time...

A special thank you to Louis Zizza, PE and Leed AP for presenting at the September meeting. His presentation on *Biomass Heating Systems* was very interesting.

The Alaska Chapter of ASHRAE is putting together a Roster for 2010-2011. If you are interested in placing a line card in our 2010-2011 Roster please see the bottom of Page 10.

If you would like to feature your business card in the Business Support section please e-mail me with a photo-ready business card. The fee is \$100 per year.

If you are interested in either the Roster or the placing your business card in the Business Support please make checks payable to ASHRAE. Checks can be dropped off at the monthly membership meeting or can be mailed to :
ASHRAE Alaska Chapter
C/O Treasurer
PO BOX 240712

If you would like to change your existing business card in the Business Support section please contact me. This section is continually updated.

If there is anything you would like to share in the Hot Gas Bypass please feel free to contact me.

If you have any questions about the Hot Gas Bypass, please feel free to contact



me at anytime.

And to conclude, please forgive the crudeness and tardiness of the release of the September newsletter, I am a rookie when it comes to publisher, but I look forward to seeing you all at the October membership meeting. I hope that everyone had a great, albeit wet summer, and got plenty of fishing, camping, and hiking in. I look forward to the coming programs as I know Jessi and Ruth have some interesting ones in store for us.

Thank you,
Blake Acton
Secretary Alaska Chapter
(907) 223-0261
bacton@victaulic.com

You might Be an engineer if:

You've actually used every single function on your graphing calculator

ASHRAE-Alaska Chapter



Visit us on the web at:
www.alaska.ashraechapters.org

Hot Gas Bypass

Advancing HVAC&R to serve humanity and promote a sustainable world

October 2010



President's Message

Anchorage Meeting Information

Date: Thursday, October 21, 2010

Location:

Westmark, 720 W 5th Ave.
Anchorage, AK 99502

Social: 5:30 p.m.

Dinner: 6:00 p.m.

Program: 7:00 p.m.

"Humidification Design Considerations"

Presented by:

Kelvan Roopnarine

Members: \$25.00

Students: \$10.00

Alaska Chapter Officers/Chairs

Ruth Armstrong, President

ruth@akwinter.com

Jessi Cherry, Vice-President

jessi.cherry@msicontrols.com

Blake Acton, Secretary

bacton@victaulic.com

Randy Williams, Treasurer

rvill@amc-engineers.com

Eric Persson, Nominating Commit. Chair

epersson@msicontrols.com

Troy Nibert, Membership

tnibert@proctorsales.com

Jeff Hurd, Technology Transfer

Jeff.hurd@avwu.biz

Jim Christian, Resource Promotion

jchristian@udelhoven.com

Keith Reed, Historian

kreed@ssialaska.com

First I want to thank all who attended last month's meeting. I also want to thank Mr. Louis Zizza of Coffman Engineers for stepping up to the plate on short notice to give us a compelling presentation on the attributes, design considerations and applications of Biomass Heating Systems. I am still trying to wrap my brain around all of the information he presented.

Secondly I want to make a note regarding ASHRAE membership. Nationally, ASHRAE is taking a hit in membership renewal. With the low renewal numbers our national association suffers due to the decreased cash flow. If you have not done so already, please renew your membership on-line today. If not, you will be getting a call from Troy Nibert, our new Membership Promotion Chairperson, to remind you. If you know of someone in your office or in your travels that is interested in ASHRAE, please let Troy know or have them contact Troy for more information on membership. While you are renewing your membership, remember to make your RP donation.

Third, but not last, I want to make note of our Roster. Stover Smith had been heading up this project, but he unfortunately was re-located out of state by his employer. Jessi Cherry has taken up the banner on this effort and we are looking forward to having

the new roster ready for distribution at next month's meeting. We will be distributing the roster by email in a .pdf format as well as a limited number of paper copies. If you have not already done so, please update your personal/professional information on the ASHRAE website at ASHRAE.org. The cut-off date at which we will use all current data on the ASHRAE website for compiling the roster is **October 31st**. This will also be the cut-off date for submissions for advertising in the roster. If you have already submitted a line-card, business card or other advertising item, please contact Jessi Cherry to make sure that she has your most current data for publication. Advertising space is still available, so if you have not made a submission please contact Jessi soon to have your business included. The advertising dollars that we raise help to off-set the cost of production and printing of the roster.

This month we are honored to have another high demand presentation. "Humidification Design Considerations" presented by Mr. Kelvan Roopnarine of Dri-Steam. Having a properly humidified space has a great impact upon not only the elimination of the dreaded static shock, but also in comfort of the occupants, as well as the load demands of a building. It greatly affects the

health of a building; the building envelope, internal mechanical systems, data equipment, fixtures and the health of the occupants. This is a dynamic portion of building design that is often overlooked, but ultimately critical to the long term investment of the building owner and their tenants. Please take a few minutes to review ASHRAE 170, in particular Addendum D and come with a lot of questions. Mr. Roopnarine is an expert in this field.

I look forward to seeing all of you at the meeting, Thursday, October 21st at 6:00 at the Westmark Hotel downtown.

Sincerely,
Ruth Armstrong
President, Alaska Chapter
ASHRAE
ruth@akwinter.com



September 2010 Program



"Humidification Design Considerations"

Presented by:

Kelvan Roopnarine

The presenter of this month's ASHRAE Technical Program is Kelvan Roopnarine, with DRI-STEEM Corporation. He will be presenting "Humidification Design Considerations". This presentation will include information about proper humidification load sizing, humidification water types, ASHRAE 170 Addendum D, and current trends in the humidification industry such as: adiabatic humidification and high efficiency isothermal dispersion systems.

Kelvan has 15 years experience in the humidification industry and is currently the Western Regional Sales Manager for DRI-STEEM Corporation. He has also worked in Engineering,

Marketing and European Sales for DRI-STEEM. Kelvan has a BS in Mechanical Engineering Technology, and currently resides in Minneapolis. Kelvan's broad humidification experience also includes: industrial water treatment systems and ground water remediation system design. In addition to ASHRAE, Kelvan is also actively involved in ASHE.

We will be meeting at the WestMark Hotel on 5th Avenue in downtown Anchorage on Thursday, October 21st. I hope to see you there.

Networking: 5:30

Dinner and Meeting: 6:00

Presentation: 7:00

Please RSVP no later than Tuesday, October 19th, 2010 at noon. **If you RSVP your cost will be \$30.00. If you do not, your cost will be \$35.00 at the door. If you RSVP, and do not show up, you will be charged \$35.00.** We have to cover cost and RSVP's are very important. If you RSVP for this event, and find that you cannot attend, let me know as soon as

possible and we will try to work with you.

Please RSVP to

Jessi Cherry

Vice President – Programs

jcherry@msicontrols.com



Don't forget to follow ASHRAE on your favorite media networks:





Research Promotion

*ASHRAE
Research*



*Today's Challenges
Tomorrow's Solutions*

Hello everyone.

As mentioned last month, our RP Goal this year is \$9000.00. We have gotten off to a good start so far in 2010. As I am tallying the money raised so far, including online donations and donations given to me, we are at \$2 111.00. That is just over 23% of our goal, in the first month. A big thanks goes out to all who have contributed to make this happen. Your names are given below and our hat goes off to you as we kick off this years campaign. A special thanks goes out to Bob Heym for helping us with such a large donation.

At the last meeting we mentioned that RSA made a \$750 donation to Russ's campaign last year which did not make the HGBP and we wanted to take the time to thank them properly now. Thanks RSA, for being a leader in ASHRAE!

In order to reach our goals this year we need everyone's help. Officers need to donate prior to November 15 in order to obtain full circle. We are almost there.

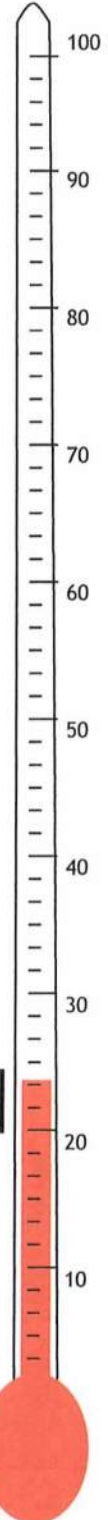
A convenient mode of giving is online, simply go to <http://www.ashraerp.com/index.html> and make your donation today. Or as you renew your membership you can donate then as well.

If you have already given money and your name does not appear at the bottom of the page, it should appear there next month, if not, please let me know.

Sincerely

Jim Christian

RP Chair



2010-2011 Research Investors, Alaska Chapter ASHRAE

<u>Organizations</u>	<u>Individuals</u>	<u>Individuals</u>
<u>\$1000 & Over</u>	<u>\$1000 & Over</u>	<u>\$100—\$249</u>
	Robert Heym	Walter Heins
<u>\$500—\$999</u>		Doug LeCren
	<u>\$250—\$999</u>	Scott Hala
	Ruth Armstrong	Jim Christian
<u>\$150—\$499</u>	Jessi Cherry	





ASHRAE Student Chapter Report

There is a bite in the air and a feeling that winter will be upon us soon. The UAA Student ASHRAE Chapter had their first meeting of the year on October 7th. They would like to extend their thanks Katharine Keith from the Mat-Su campus for her presentation on the new Renewable Energy Certificate Program. Other topics during the meeting were ASHRAE scholarship applications and getting out to our chapter meetings. I would like to thank Alaska Winter and Steinbaugh and Company. Alaska Winter will be sponsoring students at this month's meeting so that students

can attend free of charge. Steinbaugh and Company has also made a generous donation to the student sponsorship fund. Student attendance at our monthly meetings has been extremely low in the past. These donations will do a lot to help change that. There were several students that seemed excited and eager to attend this month. If you or your company would like to help with the sponsorship of students so that they could attend our meetings for free,

please contact me.

The UAA student chapter is always looking for presenters for their meetings. Our goal is to give the students a picture of the opportunities out there for new engineers. Anyone interested in doing a presentation about your business, engineering, being involved with ASHRAE, mechanical system design and technology, or other related

topics please contact me. Meetings are held 11:30 - 12:30 PM the first Thursday of every month in room 103 of the Alaska Native Science & Engineering Program (ANSEP) building on the UAA campus.

Presenting at the meetings also gives you an opportunity to meet new local talent, while giving students an opportunity to explore different career opportunities in the engineering field.

Sincerely,



“ If you think your teacher is tough, wait until you get a boss... They don't have tenure”

-Bill Gates

<u>Position</u>	<u>Name</u>	<u>E-mail</u>
Director & Region Chair	Erich Binder	erich.binder@worleyparsons.com
Assistant Regional Chair	Traci Hanegan	hanegan@coffman.com
Nominating Committee Member	Kevin Marple	kmarple@benzco.com
Nominating Committee Member	Norm Grusnick	ngrsnick@eccomfg.com
CTTC RVC	Eileen Jensen	nejensen@bpa.gov
Student RVC	Douglas LeCren	douglas.lecren@nanworleyparsons.com
Membership RVC	Russell Lavitt	rlavitt@smseng.com
Research Promotion RVC	Ray Sieber	sieber@src.sk.ca
Regional Historian	Tim McGinn	mcginnt@cohos-evamy.com
Regional Treasurer	Rob Craddock	rob@inlandmetal.ca
Regional Web Master	Kathy Habke	chapter.administrator@sac-ashrae.com
CRC 2010 Chair	Jerry Belanger	jclan@sasktel.net



Membership Report

We have received 3 new members since our September meeting. Andrew Posma, Robyn Robinson and Brian Smith. I am happy to say our delinquent members went from 18 to 12.

If you are wondering if you are registered with ASHRAE please log on to the ASHRAE website at www.ashrae.org and check or update your personal information at "Update Your Bio". If you do not have a login just follow the steps to create a free account. It's a pretty simple and quick process.

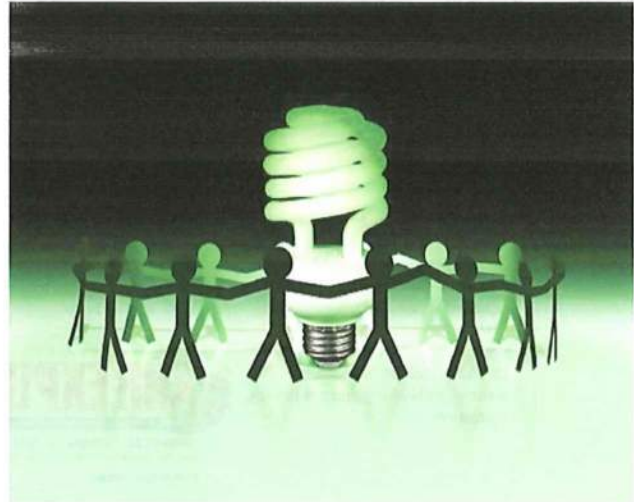
Remember – our chapter has a growth goal for the year. However it's not just about growing our

chapter but we need to retain the members we already have. If you have anyone in your organization that is a current member and is not frequently attending the monthly meetings or needs join ASHRAE please feel free to send me their contact information so I can send them a Membership Application.

See you at the meeting.

Troy Nibert

Membership Chair



Articles from ASHRAE's Public Relations Office

ASHRAE Publishes 2010 Editions of Refrigerant Safety Standards

ATLANTA – The 2010 editions of ASHRAE's major refrigerants-related standards have been published as a package with 14 new refrigerant blends added.

Requirements in ANSI/ASHRAE Standard 34-2010, *Designation and Safety Classification of Refrigerants*, and ANSI/ASHRAE Standard 15-2010, *Safety Standard for Refrigeration System*, complement each other in that Standard 34 describes a shorthand way of naming refrigerants and assigns safety classifications based on toxicity and flammability data, while Standard 15 establishes procedures for operating equipment and systems when using those refrigerants. ASHRAE sells the standards as a set.

Standard 34-2010 combines the 2007 standard and 37 published addenda. Among the key changes incorporated into the 2010 edition are:

- assignment of designations and safety classifications for one new single compound refrigerant and 14 new refrigerant blends

- addition of occupational exposure limits for refrigerants to Tables 1 and 2

- addition of new data and updates of refrigerant concentration limits (RCL) and safety classifications for several existing refrigerants

- addition of an optional 2L subclass to the existing Class 2 flammability classification, which signifies Class 2 refrigerants with a burning velocity less than or equal to 10 cm/s.

- introduction of a modified method of calculating the heat of combustion for refrigerants along with inclusion of an illustrative example of the calculation

- addition of an informative appendix showing an example of the calculation of the acute toxicity exposure limit and refrigerant concentration limit for a refrigerant blend

Changes to Standard 15 include incorporation of nine new addenda. The changes made through these addenda include:

- revision of

requirements for terminating relief vent discharge lines

- revision to bring the standard into alignment with UL 984 (*Hermetic Refrigerant-Motor Compressors*)

- addition of definitions so the standard can better provide for the safety of cascade refrigeration systems

- revision to provide appropriate guidance for the protection of positive displacement compressors when used in cascade refrigeration system configurations

- revision to bring the standard into alignment with Standard 34, by removing Table 1 for "refrigerant quantity limits," and uniformly using the term "refrigerant concentration limits"

Standard 15-2010 and Standard 34-2010 are sold

CONTINUED ON NEXT PAGE

If you would like a copy of any of these articles please contact Blake Acton, Secretary, at bacton@victaulic.com

AHR EXPO
Jan. 31 - Feb. 2
2011
LAS VEGAS
ahrexpo.com

If you would like a copy of any of these articles please contact Blake Acton, Secretary, at bacton@victaulic.com.



Articles from ASHRAE's Public Relations Office

together. The cost is \$89 (\$75 ASHRAE members). To order, contact ASHRAE Customer Service at 1-800-527-4723 (United States and Canada) or 404-636-8400 (worldwide), fax 404-321-5478, or visit www.ashrae.org/bookstore.

ASHRAE, founded in 1894, is an international organization of some 50,000 persons. ASHRAE fulfills its mission of advancing heating, ventilation, air conditioning and refrigeration to serve humanity and promote a sustainable world through research, standards writing, publishing and continuing education.

Exam to First be Offered at 2011 AHR Expo

Take the Leap: Earn Your BEAP from ASHRAE

ATLANTA – With the growing emphasis on energy consumption reduction and cost savings, there is a recognized need for credible information to help in the assessment and modeling of energy use in buildings.

A new certification program from ASHRAE will help fill that need, recognizing individuals' ability to audit and analyze residential, commercial and industrial buildings. The Building Energy Assessment Professional (BEAP) certification complements ASHRAE's Building Energy Quotient program as well as its Building Energy Modeling Professional certification. Together, the programs provide a valuable toolkit when it comes to the evaluation and reduction of building energy use.

"We all know that 'we can't manage what we can't measure,'" Tom Phoenix, chair of the committee that developed the BEAP certification, said. "Providing reliable energy analysis means we are holding ourselves more accountable for the energy our buildings use. The results of an analysis can tell us which systems are working efficiently and which systems provide opportunities for

AHR EXPO
Jan. 31 - Feb. 2, 2011
 Las Vegas Convention Center
 Las Vegas, Nevada

VIP INVITATION
 Bring this Ticket to the Show for FREE Exhibit Hall Registration
SAVE \$20!

Your ASHRAE Chapter

On Register FREE Online at: www.ashraexpo.com
 Register Online by January 2, 2011 Deadline - to have your badge mailed to you!

AHR EXPO
JANUARY 31 - FEBRUARY 2, 2011
 Las Vegas Convention Center, Las Vegas, NV

SHOW DATES AND HOURS:

Monday, January 31	10:00am - 4:00pm
Tuesday, February 1	10:00am - 4:00pm
Wednesday, February 2	10:00am - 4:00pm

GO LAS VEGAS... and Save!
 Fastest Hotel and Travel Discounters at:
www.ashraexpo.com

Produced and managed by:
 INTERNATIONAL TRADING CORPORATION LLC
 1100 Montgomery 150-800

TEST DRIVE What's NEW!

- ▶ **Bring thousands of new products from over 1,000 exhibitors to show Mass Efficiency, Profitability**
- ▶ **Get updated on the New Industry Standards, Government Initiatives and Incentive Programs**
- ▶ **Explore the latest Sustainable Building & Alternative Energy Solutions, Automation & Networking Technology, Software, and more.**
- ▶ **Attend Seminars and Workshops on Industry Trends, Green Building Initiatives, Industry Best Practices, and much more.**

FREE Online Registration and Show Information at: www.ashraexpo.com
 Or bring this card to the Show for FREE onsite registration

Register Online by January 2, 2011 Deadline - to have your badge mailed to you!
 No one under 18 admitted. US \$1 must be accompanied by an adult.

improvement."

The BEAP certification certifies individuals' ability to audit and analyze residential, commercial and industrial buildings including determining project scope, collecting data, analyzing building performance, interpreting results, evaluating alternatives, submitting recommendations for energy conservation measures and assisting with the implementation of these recommendations.

The program was developed in collaboration with representatives from ASHRAE's Building Energy Quotient (bEQ) program, the Illuminating Engineers Society, the National Institute of Building Sciences, the Sheet Metal and Air Conditioning Contractors' National Association and the Testing, Adjusting and Balancing Bureau.

The program launches Feb. 2, 2011 with a pencil and paper examination in conjunction with ASHRAE's 2011 Winter Conference. Learn more at www.ashrae.org/beap.

ASHRAE, founded in 1894, is an international organization of some

50,000 persons. ASHRAE fulfills its mission of advancing heating, ventilation, air conditioning and refrigeration to serve humanity and promote a sustainable world through research, standards writing, publishing and continuing education

If you would like a copy of any of these articles please contact Blake Acton, Secretary, at bacton@victaulic.com



Related News

The banner features the text "Zero ENERGY DESIGN" in blue and red, with a green leaf-like graphic behind the word "Zero". Below this, the phrase "A SAFE BET" is written in large, spaced-out letters. At the bottom, a blue bar contains the text "Las Vegas, Nevada" on the left and "January 29-February 2" on the right, with a red die in the center.

ASHRAE 2011 Winter Conference

Register before Nov. 5 and save! The early bird fee is \$505 (\$685 non-members)



Las Vegas, Nev., continues to build upon its reputation as a vibrant showcase for the extraordinary by offering the grandest hotels, the biggest stars in entertainment and, of course, the brightest lights. It's no wonder that the world's biggest HVAC Expo and the largest membership-based HVAC&R engineering society have chosen the city as the site of the ASHRAE 2011 Winter Conference and AHR Expo.

The extravagant setting of Las Vegas serves as a unique contrast to ASHRAE's Winter Conference theme of A Safe Bet: Zero-Energy Design. It is sure to highlight the importance of finding the balance in design. The technical program focuses on efficient use of energy, different design approaches and other topics related to refrigeration, standards and codes and HVAC systems, equipment, applications and fundamentals.

For more information please visit: www.ashrae.org/lasvegas



ASHRAE Alaska Chapter would like to Thank our Business Support

 <p>Alaska's Premiere Mechanical, Electrical, Plumbing and Telecommunications Engineering Firm Adams, Morgenthaler and Company, Inc. 701 East Tudor Road, Suite 250—Anchorage, AK 99503 Phone: 907-257-9100—Fax: 907-257-9191 www.amc-engineers.com— info@amc-engineers.com</p>	<p><i>Serving All of Alaska</i></p> <ul style="list-style-type: none"> • Filtration • Heating • Plumbing • Ventilation  <p>3901 Spenard Road Anchorage, Alaska 99517-3002 Phone: (907) 248-0000 Fax: (907) 243-3206 www.akwinter.com</p> <p>Ruth Armstrong Cell: (907) 230-0219 e-mail: ruth@akwinter.com</p>
<p>Russel "Rusty" West Alaska Sales Manager</p>  <p>Office: 425-774-6602 Direct Line: 425-977-2139 Mobile: 206-909-3664 Fax: 425-775-2272</p> <p>Email: rwest@coleindust.com</p> <p>5924 - 203rd Street Southwest • Lynnwood • WA • 98036 Serving the Pacific Northwest for over 40 years</p>	<p>"SERVING ALASKA SINCE 1957"</p>  <p>ARCHITECTS ENGINEERS SURVEYORS</p> <p>COLLEGE ROAD, FAIRBANKS, ALASKA: 1.800.668.8919</p>
 <p>JAMES P. SHELDON CO., INC. HVAC Manufacturer Representative</p> <p>201 E 54th Ave., Suite 100, Anchorage, AK, 99518 Phone 561-4747 fax 562-7473 www.jpsheldon.com</p> <p>Andrew Lee Rick Loewen</p>	<p>Jeff Robinson <i>Service & Installation Division Manager</i> jrobinson@klebsheating.com</p> <p>907.365.2500 fax 907.365.2540 www.klebsheating.com</p> <p>KLEBS Heating Plumbing Air Quality</p> <p>1107 E 72nd Avenue, Anchorage, Alaska 99518</p>
 <p>Featuring controls by: AUTOMATED LOGIC CORPORATION</p> <p>Jessi Cherry Sales Specialist Energy Management & Control Systems</p> <p>Phone: (907) 279-3320 Fax: (907) 279-2369 jessi.cherry@msicontrols.com</p>	<p>Roth-Sirianni, LLC 8040 King Street Anchorage, AK 99518 907-522-6699 • fax 907-522-1274</p> <p>Dennis F. Sirianni Manufacture's Representatives d.sirianni@alaska.com</p>
<p>R S A Engineering Inc. <i>Mechanical and Electrical Consulting Engineers</i></p>  <p>Alaskan Owned, Alaskan Operated Since 1983</p>  <p>Emerald Fitness Center</p> <p>2522 Arctic Boulevard, Anchorage, AK 99503 (907) 276-0521 (907) 276-1751 fax 191 E. Swanson Avenue, Wasilla AK 99551 (907) 357-1521 (907) 357-1751 fax www.rsa-ak.com or info@rsa-ak.com</p>	<p>STINEBAUGH & COMPANY</p> <p>5730 B Street • Anchorage, AK 99518 phone: 907.345.8021 • fax: 907.345.8022 www.stinebaugh.com</p> <p>Engineered HVAC Solutions for Alaska</p>

This page will be continually updated. Please get your business card in for the year of 2010. Business cards run from January to January for \$100.00 per year.

Please send your photo-ready card to bacton@victaulic

Or if you would like to update your existing business card please contact Blake Acton.



ASHRAE Alaska Chapter would like to Thank our Business Support

 <p>UDELHOVEN Nick Pepperworth Vice President Mechanical Administrator Project Manager</p> <p>Oilfield System Services, Inc. 184 East 53rd Avenue Anchorage, Alaska 99518-1222 www.udelhoven.com Phone: 907-375-1561 Cell: 907-351-6114 Fax: 907-562-1880 Email: Npepperworth@udelhoven.com</p>	 <p>BLAKE ACTON</p> <p>3705 Arctic Blvd. #2429 Anchorage, AK 99503 Email: bacton@victaulic.com</p> <p>Cell: 907/223-0261 Fax: 907/865-2439 Customer Care: 800/742-5842</p>
--	--

This page will be continually updated. Please get your business card in for the year of 2010. Business cards run from January to January for \$100.00 per year.

Please send your photo-ready card to bacton@victaulic

Or if you would like to update your existing business card please contact Blake Acton.

ASHRAE Roster

A S H R A E - A L A S K A C H A P T E R

The Alaska ASHRAE Chapter is going to assemble a roster for all of our members and supporters. This will be an excellent reference for all in our community. The format for this roster will be an electronic .PDF file. We are looking for support from our rep firms, manufacturers, wholesalers, contractors, engineering firms, etc. We will support this effort with line cards throughout the roster. We appreciate your support.

- Full Page Line Cards: \$250
- Half Page Line Cards: \$200
- Quarter Page Line Cards: \$150
- Business Cards: \$100



For more information about placing a line card into the Roster contact:

Jessi Cherry, Vice-President at jessi.cherry@msicontrols.com



Until Next Time...

Again, a special thank you to Louis Zizza, PE and Leed AP for presenting at the September meeting. His presentation on *Biomass Heating Systems* was very interesting.

The Alaska Chapter of ASHRAE is putting together a Roster for 2010-2011. If you are interested in placing a line card in our 2010-2011 Roster please see the bottom of Page 9.

If you would like to feature your business card in the Business Support section please e-mail me with a photo-ready business card. The fee is \$100 per year.

If you are interested in either the Roster or the placing your business card in the Business Support please make checks payable to ASHRAE. Checks can be dropped off at the monthly membership meeting or can be mailed to :
ASHRAE Alaska Chapter
C/O Treasurer
PO BOX 240712

If you would like to change your existing business card in the Business Support section please contact me. This section is continually updated.

If there is anything you would like to share in the Hot Gas Bypass please feel free to contact me.

If you have any questions about the Hot Gas Bypass, please feel free to contact



me at anytime.

Hopefully you all are going through the same rituals that I am right now, using your weekends that are too short to begin with to get ready for winter. At the very least though, we can look forward to snow machining, skiing/ snowboarding, ice fishing, or what ever your winter hobby may be because it is right around the corner. I look forward to seeing you all at the October meeting and have a have a great week.

Thank you,

Blake Acton
Secretary Alaska Chapter
(907) 223-0261
bacton@victaulic.com

You Might be an engineer if :

You have a habit of destroying things in order to see how they work.

ASHRAE-Alaska Chapter



Visit us on the web at:
www.alaska.ashraechapters.org

Hot Gas Bypass

Advancing HVAC&R to serve humanity and promote a sustainable world

January 2011



President's Message

Anchorage Meeting Information

Date: Thursday, January 20, 2011

Location:

The Westmark Hotel
720 West 5th Avenue

Social: 5:30 p.m.

Dinner: 6:00 p.m.

Program: 7:00 p.m.

"Boiler Efficiency"

Presented by: Tim Totten

Members:

RSVP'd - \$30.00

Non-RSVP'd - \$35.00

Students: \$10.00

Alaska Chapter Officers/Chairs

Ruth Armstrong, President

ruth@akwinter.com

Jessi Cherry, Vice-President

jessi.cherry@msicontrols.com

Blake Acton, Secretary

bacton@victaulic.com

Randy Williams, Treasurer

rwill@amc-engineers.com

Russ Peters, Interim Treasurer

rpete@amc-engineers.com

Eric Persson, Nominating Commit. Chair

epersson@msicontrols.com

Troy Nibert, Membership

tnibert@proctorsales.com

Jeff Hurd, Technology Transfer

Jeff.hurd@awwu.biz

Jim Christian, Resource Promotion

jchristian@udelhoven.com

Keith Reed, Historian

kreed@ssiatalaska.com

Engineer's Week is fast approaching. Anyone interested in volunteering some of their time for a worthy cause, please contact either David Nicolai at Coffman Engineers (nicolai@coffman.com) or myself. ASHRAE is the major sponsor of this year's E-Week and as such I am asking for additional volunteers to assist with events, judging and communication between the local steering committee and our local chapter. Although we have a number of volunteers to assist with the committee we are still in need of a committee leader. If you are able to assist, please call me as soon as possible.

For those planning on attending this year's AHR EXPO in Las Vegas, NV (January 31st - February 3rd), I have 20 guest passes that will get you in the door for free ("exhibits only"); a \$20 value. Let me know if you or a guest plan to attend. First come, first served, although the accompanying letter indicates that if I send in early enough, I could get more passes.

Please join me in thanking Dale Houston of H & K Sheetmetal Fabricators for allowing us to tour his sheet metal shop and for his knowledge and expertise in

explaining the inner workings and business practices of a top notch, professional, sheet metal company. I was thrilled to see the extraordinary turnout of members and students for the tour. I would also like to thank Jim Christian for his help in making this Research Promotion night as well as Jeff Hurd for his excellent bartending skills. The BOG will be meeting to vote on the donation of the funds raised.

A big THANK YOU to Jessi Cherry, who has taken up the banner on the new roster. The new roster will be distributed by e mail in a .pdf version in January and hard copies will be available at our February meeting.

This month we are honored to have Mr. Tim Totten of Aerco Internation with us to present on Boiler Efficiency and the SPC-155 special committee.

The Annual CRC will be upon us soon. This year's Delegate for the Alaska chapter will be Jessi Cherry, the alternate will be Blake Acton. This year's conference will be held in Portland, Oregon. If you have a motion

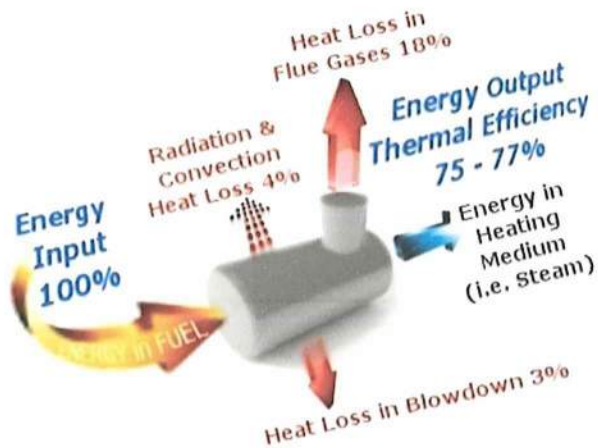
that you would like to have brought forward for the upcoming conference, please contact one of Jessi, Blake or one of your Board of Governors members and we will make sure that it is brought before the board prior to the CRC for submission. Also, if you are interested in running for a regional office, let Jessi, Blake or a board member know so that we can get all of your information submitted before the CRC for consideration during the conference.

I look forward to seeing all of you at the meeting, Thursday, January 20th at 6:00 at the Westmark Hotel.

Sincerely,
Ruth Armstrong
President, Alaska Chapter
ASHRAE
ruth@akwinter.com



November 2010 Program



“Boiler Efficiency”

Presented by:

Tim Totten

The presenter of this month’s ASHRAE Technical Program is Tim Totten with Aerco International. He will be presenting on Boiler Efficiency. This presentation will explain ways boiler efficiency is currently measured and the real world circumstances that make current standards inadequate. Existing boiler rating systems do not fully describe a boiler’s actual efficiency under operating conditions of modern condensing boilers. ASHRAE has recognized this, and has established a committee (SPC-155) who is currently developing a method for rating commercial boiler systems. This

presentation will help explain the current standards and methods used for establishing boiler efficiencies. Attendees will be better suited to review manufacturer’s claims and will understand strategies to apply modern boilers to maximum condensing utility.

We will be meeting at the WestMark Hotel on 5th Avenue in downtown Anchorage on Thursday, January 20th. I hope to see you there.

Networking: 5:30

Dinner and Meeting:
6:00

Presentation: 7:00

Please RSVP no later than Tuesday, January 18th, 2010 at noon. **If you RSVP your cost will be \$30.00. If you do not, your cost will be**

\$35.00 at the door. If you RSVP, and do not show up, you will be charged \$35.00. We have to cover cost and RSVP’s are very important. If you RSVP for this event, and find that you cannot attend, let me know as soon as possible and we will try to work with you.

Please RSVP to

Jessi Cherry

Vice President –
Programs

jcherry@msicontrols.com
m

Don’t forget to follow ASHRAE on your favorite media networks:

facebook.

twitter



Research Promotion

ASHRAE
Research



Today's Challenges
Tomorrow's Solutions

Hello everyone.

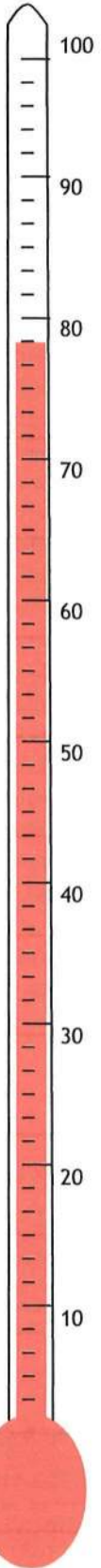
It was a very profitable month for RP. Since the last newsletter, we have increased from about 32% of our goal to 78% of our goal. That is an increase of 46% or about \$4,150. Much of this increase is due to some of our corporate donors. Thank you for realizing how important ASHRAE is for your business.

Every dollar counts. If you have not donated, you can give in about 3 different ways. First, simply go to <http://www.ashraerp.com> and click donate. Second, as you renew your membership you can donate at the same time. Finally, you can mail me a check made out to ASHRAE research.

If you have already given money and your name does not appear at the bottom of the page, it should appear there next month, if not, please let me know.

Remember . . . "Give now and save a phone call later."

Sincerely
Jim Christian
RP Chair



2010-2011 Research Investors, Alaska Chapter ASHRAE		
<u>Organizations</u>	<u>Individuals</u>	<u>Individuals</u>
<u>\$1000 & Over</u>	<u>\$1000 & Over</u>	<u>\$100—\$249</u>
	Robert Heym	Walter Heins
<u>\$500—\$999</u>		Doug LeCren
Adams Morgenthaler & Co. Inc.	<u>\$250—\$999</u>	Scott Hala
Coffman Engineers	Ruth Armstrong	Jim Christian
PDC Inc. Engineers	Jessi Cherry	Randy Williams
RSA Engineering Inc.	Dan Fawcett	Blake Acton
The Superior Group Inc.	Bob Whealy, PE	Ginger Schaa
	Daniel Fawcett	





ASHRAE Student Chapter Report

I hope everyone is having a fantastic New Year. National Engineers Week (E-Week) is just around the corner. E-Week highlights the contributions of our nation's engineers. E-week also focuses on getting students excited about science and engineering. There are many opportunities for volunteers to get involved. If you would like to volunteer your time, we have points of contact for the different events. If you are already involved, we would like to know how you or your company will be contributing. I urge all of our members to get involved with students and get them excited about science and engineering throughout the year. This could be giving presentations, conducting tours and setting up events for K-12 or college students. I am available to help make the connections if you or your company wants to get in front

of students and get involved. We hope to see many more at the upcoming monthly meeting. These students are eager to meet and talk with all of our chapter members and learn more about engineering and the endless possibilities in the industry after college. Please introduce yourself and meet some of these bright young people.

The UAA student chapter is always looking for presenters for their meetings. Our goal is to give the students a picture

of the opportunities out there for new engineers. Anyone interested in doing a presentation about your business, engineering, being involved with ASHRAE, mechanical system design and technology, or other related topics please contact me. Meetings are held 11:30 – 12:30 PM the first Thursday of every month in room 103 of the Alaska Native Science & Engineering Program (ANSEP) building on the UAA campus.

Presenting at the meetings also gives you an opportunity to meet new local talent, while giving students an opportunity to explore different career opportunities in the engineering field.

Sincerely,

Michael D. Anderson

Student Activities

907.563.2242

mikeanderson@siemens.com



<u>Position</u>	<u>Name</u>	<u>E-mail</u>
Director & Region Chair	Erich Binder	erich.binder@worleyparsons.com
Assistant Regional Chair	Traci Hanegan	hanegan@coffman.com
Nominating Committee Member	Kevin Marple	kmarple@benzco.com
Nominating Committee Member	Norm Grusnick	ngrsnick@eccomfg.com
CTTC RVC	Eileen Jensen	nejensen@bpa.gov
Student RVC	Douglas LeCren	douglas.lecren@nanworleyparsons.com
Membership RVC	Russell Lavitt	rlavitt@smseng.com
Research Promotion RVC	Ray Sieber	sieber@src.sk.ca
Regional Historian	Tim McGinn	mcginnt@cohos-evamy.com
Regional Treasurer	Rob Craddock	rob@inlandmetal.ca
Regional Web Master	Kathy Habke	chapter.administrator@sac-ashrae.com
CRC 2010 Chair	Jerry Belanger	jclan@sasktel.net

“If you think your teacher is tough, wait until you get a boss... They don't have tenure”

-Bill Gates



Membership Report

Happy New Year, our new members since our last meeting are as follows:

- Kristopher Reed
- Dr. Steffen Peuker
- Charlie Hamilton
- Jerome Schultz

That makes 18 new members year this season.

Out of 206 active members only 7 are currently delinquent, that is a all time

low for this season. Great job, we should have that number down to zero in no time. Thank you to everyone that renewed their memberships. Take a moment before this month's chapter meeting and ask one of your co-workers to attend with you. Helping to grow our ASHRAE Membership is everyone's responsibility.

REMEMBER, THE EASIEST AND QUICKEST WAY TO JOIN ASHRAE AND PAY DUES (RENEW) IS ONLINE AT www.ashrae.org

See you at this month's meeting.

Troy Nibert



CTTC Report

Continuing Education:

We are working on getting some seminars and technical sessions for those who need CEU's. Please keep me informed as to topics of interest so I can make arrangements for continuing education credits and to get presentations set up. If you have any questions please let me know.

Technology Award:

I'm trying to get individuals or companies to submit for the 2011 ASHRAE Technology Awards for the upcoming (CRC) Chapters Regional Conferences. The ASHRAE Technology Awards are not due till April 15th 2011. It would be great for someone to submit a project or two for the ASHRAE Technology Awards. Also to have a

local individual or companies win the Award. As for the chapter we haven't submitted a Technology Award in a few years. Please let me know if you have any questions. **Just email me and I'll send you the Technology Award Short Form.**

Jeffery D. Hurd (CTTC)

Project Management/Civil Engineer I

Anchorage Water and Wastewater Utility

Work (907) 786-5526 Cell (907) 317-7285

Jeff.hurd@awwu.biz

AHR EXPO
Jan. 31 - Feb. 2
2011
LAS VEGAS
ahrexpo.com

If you would like a copy of any of these articles please contact Blake Acton, Secretary, at bacton@victaulic.com.



Articles from ASHRAE's Public Relations Office

ASHRAE Brings Hot Topics to AHR Expo Attendees

ATLANTA – Guidance on industry hot topics is being provided from ASHRAE through two free sessions at the AHR Expo® in Las Vegas, Nev.

A Practical Guide for Reducing Air Leakage in HVAC Air Systems takes place Monday, Jan. 31, 2:15-3:45 p.m., while an update on Standard 90.1 – 2010 Update: How It Affects You takes place on Tuesday, Feb. 1, 2:15-3:45 p.m. The two sessions offer Show attendees 1.5 PDHs each for a total of 3.

Monday's session focuses on the fact that excessive air leakage in HVAC systems is known to be a significant source of energy waste. This session identifies the current standards, guidelines and project specification that influence air leakage and highlights the roles and responsibilities of the engineer, contractor and manufacturer to assure they meet our common goal of reducing air

leakage in HVAC systems.

The Tuesday session provides an update on ANSI/ASHRAE/IESNA Standard 90.1-2010, Energy Standard for Buildings Except Low-Rise Residential Buildings. With well over 100 addenda incorporated since the 2007 edition, this session highlights some of the major changes in 2010 standard.

Both sessions are held in Room N256 of the Las Vegas Convention Center. No ticket or badge is required for admittance.

The 2011 ASHRAE Winter Conference is held in conjunction with the Expo and runs Jan. 29-Feb. 2 at the Las Vegas Hilton. Additional courses and sessions are offered through the Conference's Technical Program and the ASHRAE Learning Institute. More information can be found at www.ashrae.org/lasvegas.

ASHRAE is an international technical society that fulfills its mission of advancing heating, ventila-

tion, air conditioning and refrigeration to serve humanity and promote a sustainable world through research, standards writing, publishing and continuing education.

ASHRAE Applauds Signing of Federal Buildings Personnel Training Law of 2010

ATLANTA – Federal legislation signed into law this week will provide training for federal building personnel in the areas of building operations and maintenance, energy management, safety and design functions.

On Tuesday, Dec. 14, President Obama signed the Federal Buildings Personnel Training Act. The Act was introduced in April by Reps. Russ Carnahan (D-Mo.) and Judy Biggert (R-Ill.) and Sen. Tom Carper (D-De.) and Susan Collins (R-Me.). It was supported by more than 33 leading organizations involved in the design, construction, operation and maintenance



Articles from ASHRAE's Public Relations Office

of buildings, including ASHRAE.

The legislation will help provide federal workers with the necessary training to construct and maintain environmentally sound buildings. Federal workers will be able to be trained in a series of core competencies relating to building operations, maintenance, energy management, and safety and future performance. Workers can take courses and be able to obtain licenses and certification for their efforts.

“This law is a significant advancement for the design, construction, operation and maintenance of our nation’s federal buildings,” Lynn G. Bellenger, ASHRAE president, said. “ASHRAE applauds the federal government for demonstrating what can be accomplished in building and maintaining energy efficient buildings with excellent indoor environmental quality.”

ASHRAE, founded in 1894, is an international organization of some 50,000 persons. ASHRAE fulfills its mission of advancing heating, ventilation, air conditioning and refrigeration to serve humanity and promote a sustainable world through research, standards writing, publishing and continuing education.

189.1 User's Manual Helps Professionals Apply Standard

The newly published User’s Manual for ANSI/ASHRAE/USGBC/IES Standard 189.1-2009, *Standard for the Design of High-Performance, Green Buildings Except Low-Rise Residential Buildings*, provides explanations of the standard’s requirements and examples of its application. It includes sample calculations, forms to demonstrate compliance and references to helpful resources and websites. [Read more](#)

Building Performance Software From Emerson Climate Technologies

ST. LOUIS—ProAct Software from Emerson Climate Technologies gathers enterprise data into a single tool and provides information for enhancing energy efficiency, better asset management, reducing maintenance costs, and tracking compliance. It provides notification of operational issues, such as equipment failure, excess power consumption and setpoint changes. In retail environments, the software enables users to benchmark store performance across their enterprise and against industry standards.

[Read more](#)



Related News

Zero ENERGY DESIGN

A SAFE BET

Las Vegas, Nevada January 29-February 2

ASHRAE 2011 Winter Conference

Register before Nov. 5 and save! The early bird fee is \$505 (\$685 non-members)



Las Vegas, Nev., continues to build upon its reputation as a vibrant showcase for the extraordinary by offering the grandest hotels, the biggest stars in entertainment and, of course, the brightest lights. It's no wonder that the world's biggest HVAC Expo and the largest membership-based HVAC&R engineering society have chosen the city as the site of the ASHRAE 2011 Winter Conference and AHR Expo.

The extravagant setting of Las Vegas serves as a unique contrast to ASHRAE's Winter Conference theme of A Safe Bet: Zero-Energy Design. It is sure to highlight the importance of finding the balance in design. The technical program focuses on efficient use of energy, different design approaches and other topics related to refrigeration, standards and codes and HVAC systems, equipment, applications and fundamentals.

For more information please visit: www.ashrae.org/lasvegas



ASHRAE Alaska Chapter would like to Thank our Business Support

 <p>Alaska's Premiere Mechanical, Electrical, Plumbing and Telecommunications Engineering Firm Adams, Morgenthaler and Company, Inc. 701 East Tudor Road, Suite 250—Anchorage, AK 99503 Phone: 907-257-9100—Fax: 907-257-9191 www.amc-engineers.com— info@amc-engineers.com</p>	<p><i>Serving All of Alaska</i></p> <ul style="list-style-type: none"> • Filtration • Heating • Plumbing • Ventilation  <p>3901 Spenard Road Anchorage, Alaska 99517-3002 Phone: (907) 248-0000 Fax: (907) 243-3206 www.akwinter.com</p> <p>Ruth Armstrong Cell: (907) 230-0219 e-mail: ruth@akwinter.com</p>
<p>Russel "Rusty" West Alaska Sales Manager</p>  <p>Office: 425-774-6602 Direct Line: 425-977-2139 Mobile: 206-909-3664 Fax: 425-775-2272</p> <p>Email: rwest@coleindust.com</p> <p>5924 - 203rd Street Southwest • Lynnwood • WA • 98036 Serving the Pacific Northwest for over 40 years</p>	<p>Architects · Engineers · Surveyors</p>  <p>Meet all your design needs in one place.</p>  <p>800.668.8919 www.designalaska.com</p>
 <p>JAMES P. SHELDON CO., INC. HVAC Manufacturer Representative</p> <p>201 E 54th Ave., Suite 100, Anchorage, AK, 99518 Phone 561-4747 fax 562-7473 www.jpsheldon.com</p> <p>Andrew Lee Rick Loewen</p>	<p>Jeff Robinson <i>Service & Installation Division Manager</i> jrobinson@klebsheating.com</p> <p>907 365 2500 fax 907 365 2540 www.klebsheating.com</p> <p>KLEBS Heating Plumbing Air Quality</p> <p>1107 E 72nd Avenue, Anchorage, Alaska 99518</p>
 <p>Featuring controls by: AUTOMATED LOGIC CORPORATION</p> <p>Jessi Cherry Sales Specialist Energy Management & Control Systems</p> <p>Phone: (907) 279-3320 Fax: (907) 279-2369 jessi.cherry@msicontrols.com</p>	<p>Roth-Sirianni, LLC 8040 King Street Anchorage, AK 99518 907-522-6699 • fax 907-522-1274</p> <p>Dennis F. Sirianni Manufacture's Representatives d.sirianni@alaska.com</p>
<p>R S A Engineering Inc. Mechanical and Electrical Consulting Engineers</p>  <p>Alaskan Owned, Alaskan Operated Since 1983</p>  <p>© 2007 Kevin G. Smith Emerald Fitness Center</p> <p>2522 Arctic Boulevard, Anchorage, AK 99503 (907) 276-0521 (907) 276-1751 fax 191 E. Swanson Avenue, Wasilla AK 99651 (907) 357-1521 (907) 357-1751 fax www.rsa-ak.com or info@rsa-ak.com</p>	<p>STINEBAUGH & COMPANY</p> <p>5730 B Street • Anchorage, AK 99518 phone: 907.345.8021 • fax: 907.345.8022 www.stinebaugh.com</p> <p>Engineered HVAC Solutions for Alaska</p>

This page will be continually updated. Please get your business card in for the year of 2011. Business cards run from January to January for \$100.00 per year. Please send your photo-ready card to bacton@victaulic Or if you would like to update your existing business card please contact Blake Acton.



ASHRAE Alaska Chapter would like to Thank our Business Support



UDELHOVEN
 Nick Pepperworth
 Vice President
 Mechanical Administrator
 Project Manager

Oilfield System Services, Inc.
 184 East 53rd Avenue
 Anchorage, Alaska 99518-1222
 www.udelhoven.com
 Phone: 907-375-1561
 Cell: 907-351-6114
 Fax: 907-562-1880
 Email: Npepperworth@udelhoven.com



BLAKE ACTON

3705 Arctic Blvd. #2429
 Anchorage, AK 99503
 Email: bacton@victaulic.com

Cell: 907/223-0261
 Fax: 907/865-2439
 Customer Care: 800/742-5842

This page will be continually updated. Please get your business card in for the year of 2011. Business cards run from January to January for \$100.00 per year.

Please send your photo-ready card to bacton@victaulic

Or if you would like to update your existing business card please contact Blake Acton.

ASHRAE Business Cards

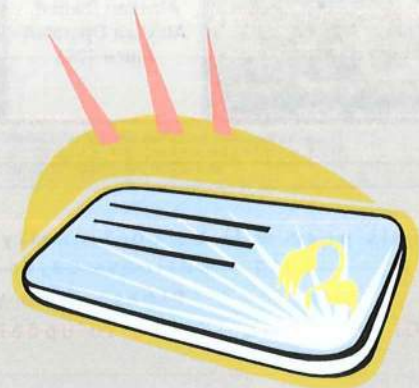
A S H R A E - A L A S K A C H A P T E R

It is that time again, time to renew your business card subscription to show your support for The Alaska ASHRAE Chapter. Subscriptions will run from January 2011 - January 2012. The year long subscription fee is \$100 and can be paid either at the monthly membership meetings or by mailing a check to the address below. If you are interested please email me a photo-ready business card or let me know that you would like to continue the one currently being used. We are looking for support from our rep firms, manufacturers, wholesalers, contractors, engineering firms, etc. If you have any questions regarding renewing or a new subscription please contact me.

- Business Cards: \$100

For more information about placing a business card in the business support section contact:
 Blake Acton, Secretary at bacton@victaulic.com

ASHRAE Alaska Chapter
 C/O Treasurer
 PO BOX 240712
 Anchorage, Alaska 99524-0712





Until Next Time...

I hope that you all had a wonderful holiday season filled with relaxation and time spent with friends and family. This months meeting presentation "Boiler Efficiency" presented by Tim Totten is sure to be an interesting one and I hope to see you all there.

On other notes the Alaska Chapter of ASHRAE is putting together a Roster for 2010-2011. If you are interested in placing a line card in our 2010-2011 Roster please see the bottom of Page 10.

If you would like to feature your business card in the Business Support section please e-mail me with a photo-ready business card. The fee is \$100 per year.

If you are interested in either the Roster or the placing your business card in the Business Support please make checks payable to ASHRAE. Checks can be dropped of at the monthly membership meeting or can be mailed to :
ASHRAE Alaska Chapter
C/O Treasurer
PO BOX 240712

If you would like to change your existing business card in the Business Support section



please contact me. This section is continually updated.

If there is anything you would like to share in the Hot Gas Bypass please feel free to contact me.

If you have any questions about the Hot Gas Bypass, please feel free to contact me at anytime.

Thank you,

Blake Acton
Secretary Alaska Chapter
(907) 223-0261
bacton@victaulic.com

Joke

An engineer was crossing a road one day when a frog called out to him and said, "If you kiss me, I'll turn into a beautiful princess".

He bent over, picked up the frog and put it in his pocket.

The frog spoke up again and said, "If you kiss me and turn me back into a beautiful princess, I will stay with you for one week."

The engineer took the frog out of his pocket, smiled at it and returned it to the pocket.

The frog then cried out, "If you kiss me and turn me back into a princess, I'll stay with you and do ANYTHING you want."

Again the engineer took the frog out, smiled at it and put it back into his pocket.

Finally, the frog asked, "What is the matter? I've told you I'm a beautiful princess, that I'll stay with you for a week and do anything you want. Why won't you kiss me?"

The engineer said, "Look I'm an engineer. I don't have time for a girlfriend, but a talking frog, now that's cool."

ASHRAE-Alaska Chapter



Visit us on the web at:
www.alaska.ashraechapters.org

Hot Gas Bypass

Advancing HVAC&R to serve humanity and promote a sustainable world

April 2011



President's Message

Anchorage Meeting Information

Date: Thursday, April 21, 2011

Location:
The Westmark Hotel
720 West 5th Avenue

Social: 5:30 p.m.

Dinner: 6:00 p.m.

Program: 7:00 p.m.

"Backflow Prevention"

Presented by:
Gary Hile

Members:

RSVP'd - \$30.00

Non-RSVP'd - \$35.00

Students: \$10.00

Alaska Chapter Officers/Chairs

Ruth Armstrong, President

ruth@akwinter.com

Jessi Cherry, Vice-President

jessi.cherry@msicontrols.com

Blake Acton, Secretary

bacton@victaulic.com

Randy Williams, Treasurer

rwill@amc-engineers.com

Greg Jemstrom, Interim Treasurer

rpete@amc-engineers.com

Eric Persson, Nominating Commit. Chair

epersson@msicontrols.com

Troy Nibert, Membership

tnibert@proctorsales.com

Jeff Hurd, Technology Transfer

Jeff.hurd@avva.biz

Jim Christian, Resource Promotion

jchristian@udelthoven.com

Keith Reed, Historian

kreed@ssiaska.com

We have a number of exciting events coming up over the next few weeks. First there is the ASHRAE webinar on April 21st. Coffman Engineers has stepped forward to offer their conference room to host our chapters presentation of the webinar "Ground Source Heat Pump Systems". The webinar is scheduled to be broadcast from 9 am until 12 pm. Please RSVP to Walter Heins at, Heins@coffman.com. Space is limited to 12 attendees due to the size of their conference room.

Second, we have our monthly membership meeting on April 21st as well. This month's meeting will be a joint meeting with IAPMO. Mr. Gary Hile will be making a presentation on "Backflow Prevention". Mr. Hile is a longtime resident of Alaska and has been a Municipal Inspector with the city of Anchorage since 1992. As this has historically been a high turnout meeting, please get your RSVP in early so that we can have an accurate head count for dinner. This is an excellent opportunity for us to network with our IAPMO partners in the community.

And last, but certainly not least, our annual Chapters Regional Conference will be May 11th thru the 14th in Portland, OR. An

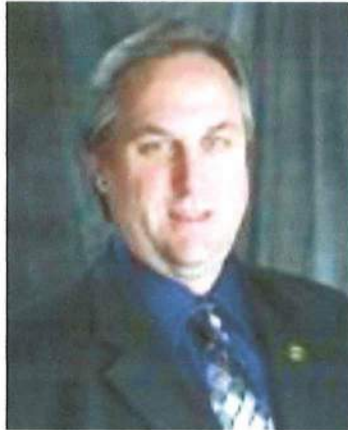
announcement has been sent out with registration and hotel information for anyone who would like to attend. If you will be attending, please contact Jessi Cherry as soon as you are registered so that we can get our chapter PAOE points entered before the conference. If you would like to have a motion presented or if you are interested in running for a regional position, please contact our delegate for this year's CRC, Jessi Cherry, for more information.

I hope you all can make it to the meeting, Thursday, April 21st at 6:00 at the Westmark Hotel.

Sincerely,
Ruth Armstrong
President, Alaska Chapter
ASHRAE
ruth@akwinter.com



April 2011 Program



“Backflow Prevention”

Presented by:

Gary Hile

April's ASHRAE meeting will be a joint meeting with the International Association of Plumbing and Mechanical Officials (IAPMO). The presenter of this month's ASHRAE Technical Program is Gary Hile who is a third generation practitioner of the trades; his grandfather, father, and brother were all members of the plumbing profession. He will be presenting on Backflow Prevention.

The Alaska native recalls riding along on jobs to observe the plumbing craft from a young age. “Both my grandfather and my dad taught me what having pride in your work is all about,” he says.

Hile entered the profession 27 years ago, completing his apprenticeship and putting in his years as a journeyman. From 1989 to 1992, he worked as a plumbing foreman. He then began his career as a plumbing and mechanical inspector with the

City of Anchorage in 1992 and was appointed to his present position as Chief Plumbing/Mechanical Inspector in 2000.* Hile is a Certified Plumbing Inspector (IAPMO), a Certified Mechanical Inspector (IAPMO and ICBO), a Certified Medical Gas Inspector (PIPE), a Certified Backflow Assembly Tester for the Municipality of Anchorage, and a Certified Backflow Assembly Instructor through the University of Florida.

At IAPMO, Hile serves on the Audit Committee, Bylaws Committee, R&T Board of Directors, Executive Committee, Uniform Mechanical Code Workshop Committee, and UMC Answers and Analysis Committee. In addition, he's also chaired IAPMO's Anchorage Chapter and served on the UPC Technical Committee. “I am honored and privileged to have the opportunity to continue serving the IAPMO membership as vice president,” he says.

“I truly appreciate all the support I have received and the

continued vote of confidence. IAPMO continues to grow as an organization and I will do what I can to contribute to that sustaining growth. I see nothing but a positive achievement in the future for IAPMO as the organization expands into new territory and extends its hand to the rest of the world to help everyone obtain the same quality plumbing systems that we have benefited from for many years.”

Hile and his wife, Lynda, have been happily married for 21 years. They have two boys, Logan and Carson. Hile enjoys spending time with his family, snowmobiling, golfing, working with computers, NASCAR racing and power boating.

We will be meeting at the WestMark Hotel on 5th Avenue in downtown Anchorage on Thursday, April 21st. I hope to see you there.

Networking: 5:30

Dinner and Meeting: 6:00

Presentation: 7:00

Please RSVP no later than Tuesday, April 19th, 2010 at noon. **If you RSVP your cost will be \$30.00. If you do not, your cost will be \$35.00 at the door. If you RSVP, and do not show up, you will be charged \$35.00.** We have to cover cost and RSVP's are very important. If you RSVP for this event, and find that you cannot attend, let me know as soon as possible and we will try to work with you.

Please RSVP to

Jessi Cherry

Vice President – Programs

jcherry@msicontrols.com

Don't forget to follow ASHRAE on your favorite media networks:

facebook

twitter



Research Promotion

ASHRAE
Research



Today's Challenges
Tomorrow's Solutions

We are at 118% of our goal... That is amazing! In the past month we have had donations totaling \$1050. Thanks to all who have given!

Engineers are often perfectionists. Many times we are credited with saying things like, "if it's not broke, how can I make it better?" I am no different. I realize that RP is doing really well, and I want to thank each and everyone who has donated. However, at 118% we are still short of last year's total. I want us to "do better." I want us to surpass our "high five" goal and our "high five challenge goal." These are goals that are set by society based on our previous performance. The high five challenge goal is \$11,798, and we are at \$10,591 dollars. We can do this, in fact we have a plan to do so! If we met this goal, this would be the highest amount garnered over the last 10 years, and quite possibly the highest ever.

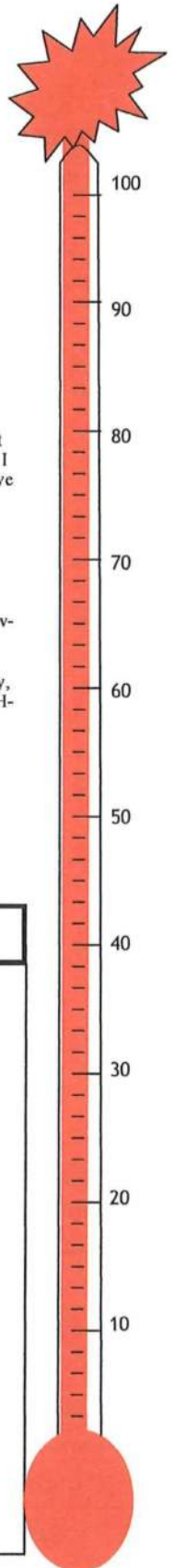
How are we doing this? Among other things, we are, "Shooting for our Goal." We are hosting the first ever, "RP Shootout." This is a skeet shoot at Birchwood Shooting Park. The date is April 22, and it will last from 1:00-5:00. Please see the attached flyer for more information regarding this exciting event.



For those who have not given, your donations are crucial, especially if you have made a pledge to do so. We are moving on to higher ground and we need your help to get there. Please give!

You can give in about 3 different ways. First, simply go to <http://www.ashraerp.com> and click "donate." Secondly, as you renew your membership, you can donate at the same time. Finally, you can mail me a check made out to ASHRAE research, I will mail it in to National for you.

Sincerely
Jim Christian
RP Chair



2010-2011 Research Investors, Alaska Chapter ASHRAE

<u>Organizations</u>	<u>Individuals</u>	<u>Individuals</u>
<p><u>\$1000 & Over</u> IAPMO</p> <p><u>\$500—\$999</u> Adams Morgenthaler & Co. Inc. Coffman Engineers, Inc PDC Inc. Engineers RSA Engineering Inc. The Superior Group Inc. Design Alaska Inc. Stinebaugh & Company Meridian Systems Inc.</p> <p><u>\$150—\$499</u> EDC Inc. Hay, Zietlow, and Assoc. LLC Proctor Sales Inc.</p> <p><u>Up to \$149</u> Murray & Associates Industrial Service Corporation</p>	<p><u>\$1000 & Over</u> Robert Heym</p> <p><u>\$250—\$999</u> Ruth Armstrong Jessi Cherry Dan Fawcett Bob Whealy, PE Jan Van Den Top, PE John Fortner Eric Persson</p>	<p><u>\$100—\$249</u> Walter Heins Doug LeCren Scott Hala Jim Christian Randy Williams Blake Acton Ginger Schaaf Dave Duprow Brian Miller Lee Holmes, PE Boyd Morgenthaler W C Simmons Troy Nibert Doug Brandon Andrew Lee Jeromy Reed</p> <p><u>Up to \$100</u> William Elam Russell West</p>





ASHRAE Student Chapter Report

The temperature is rising, the snow is melting and the students are finishing up the school year. This month the UAA student chapter is working with other UAA student engineering organizations to host an Engineer Fun Night April 16th at 6:00 PM in the ANSEP building on the UAA campus. The students are extending an invitation to all ASHRAE chapter members to attend. It will be an evening with food, prizes and technology showcases. It will also be a great opportunity to interact with students and potentially recruit future talent. For more information, please contact me.

We hope to see much more student participation at the monthly meetings. These students are eager to meet and talk with all of our chapter members as well as

learn more about engineering and opportunities after college. Please introduce yourself and meet some of these bright young people.

The UAA student chapter is always looking for presenters for their meetings. Our goal is to give the students a picture of the opportunities out there for new engineers. Anyone interested in doing a presentation about your business, engineering,

being involved with ASHRAE, mechanical system design and technology, or other related topics please contact me. The last student chapter meeting until school starts up again in the fall will be held from 11:30 to 12:30 PM Thursday April 21st in room 103 of the Alaska Native Science & Engineering Program (ANSEP) building on the UAA campus.

Presenting at the meetings also gives you an

opportunity to meet new local talent, while giving students an opportunity to explore different career opportunities in the engineering field.

Sincerely,
Michael D. Anderson
Student Activities
907.563.2242
mikeanderson@siemens.com



“ To the optimist, the glass is half full.

To the pessimist, the glass is half empty.

To the engineer, the glass is twice as big as it needs to be. ”

-Unknown

<u>Position</u>	<u>Name</u>	<u>E-mail</u>
Director & Region Chair	Erich Binder	erich.binder@worleyparsons.com
Assistant Regional Chair	Traci Hanegan	hanegan@coffman.com
Nominating Committee Member	Kevin Marple	kmarple@benzco.com
Nominating Committee Member	Norm Grusnick	ngrsnick@eccomfg.com
CTTC RVC	Eileen Jensen	nejensen@bpa.gov
Student RVC	Douglas LeCren	douglas.lecren@nanworleyparsons.com
Membership RVC	Russell Lavitt	rlavitt@smseng.com
Research Promotion RVC	Ray Sieber	sieber@src.sk.ca
Regional Historian	Tim McGinn	mcginnt@cohos-evamy.com
Regional Treasurer	Rob Craddock	rob@inlandmetal.ca
Regional Web Master	Kathy Habke	chapter.administrator@sac-ashrae.com
CRC 2010 Chair	Jerry Belanger	jclan@sasktel.net



Membership Report

We have a record breaking 214 active members with only 8 currently in the delinquency line. Remember to take a moment to go to www.ashrae.org and renew your dues.

See you at this month's meeting.

Troy Nibert



CTTC Report

Continuing Education:

Going to be working on getting two Tech Sessions set up for October and November 2011 for those who need CEU's. One of the Tech Sessions is going to be on ASHRAE 90.1. Please keep me informed as to topics of interest so I can make arrangements for continuing education credits and to get presentations set up. If you have any questions please let me know.

Technology Award:

I'm trying to get individuals or companies to submit for the 2010 ASHRAE Technology Awards for the upcoming (CRC) Chapters Regional Conferences. The ASHRAE Technology Awards are not due till April 15th 2010. It would be great for someone to

submit a project or two for the ASHRAE Technology Awards. Also to have a local individual or companies win the Award. As for the chapter we haven't submitted a Technology Award in a few years. Please let me know if you have any questions. **Just email me and I'll send you the Technology Award Short Form.**

Jeffery D. Hurd (CTTC)
Project Management/Civil Engineer I

Anchorage Water and Wastewater Utility

Work (907) 786-5526 Cell (907) 317-7285

Jeff.hurd@awwu.biz

If you would like a copy of any of these articles please contact Blake Acton, Secretary, at bacton@victaulic.com.



ASHRAE—Alaska Chapter

Presents:



RP SHOOTOUT

Date: April 22, 2011

Where: Birchwood Recreation & Shooting Park

Time: 1:00-5:00 PM

Event: 1) 5 member teams will be competing in 3 rounds of skeet.

2) Each team member will be provided with 3 boxes of ammunition.

3) Snacks will be available.

Cost: \$100 per person.

Benefit: All proceeds go to benefit ASHRAE Research Promotion

Shooters:

- 1) _____
- 2) _____
- 3) _____
- 4) _____
- 5) _____

Payment Method: _____

Credit Card Number: _____

Contact Phone Number: _____

ASHRAE Research Promotion

“Aim Small Miss Small” -

Mel Gibson,

The Patriot



Please fill out form and send to Jim Christian, 2011 RP Chair. Fax: 562-1880,





Articles from ASHRAE's Public Relations Office

Call for Papers Papers on Integrated Design Sought for ASHRAE's 2012 Winter Conference

ATLANTA – As the building industry seeks to reduce use of fossil based fuel sources, increase energy efficiency and reduce energy consumption and the use of natural resources, more efficient, integrated and intra-disciplinary approaches to designing, constructing, operating and maintaining facilities are needed.

For its 2012 Winter Conference, ASHRAE is seeking papers on how the integrated building design and integrated project delivery processes are currently being applied to build better buildings and how those processes and workflows need to evolve if we are to meet our commitments of net zero energy buildings over the next two decades. Papers discussing actual case studies of real life projects, lessons learned and ongoing research projects studying new project delivery methods are highly encouraged to submit for presentation.

The conference takes place Jan. 21-25, Chicago.

In addition, papers are sought for tracks on Specialized Applications, Energy Modeling, Operations

& Maintenance, HVAC Systems, HVAC Fundamentals and Applications, Professional Skills and Refrigeration.

The deadline for paper submissions is April 18, 2011. For complete information on tracks, contacts and submittal requirements, visit www.ashrae.org/chicago.

Full-length technical papers or conference paper abstracts (400 words or less) should be submitted by April 18.

For more information about the two types of papers and how to submit a full-length technical paper or conference paper abstract, go to the ASHRAE Chicago Conference webpage: www.ashrae.org/chicago. For accepted conference paper abstracts, the completed conference papers will be due July 8, 2011.

The Conference is expected to attract some 3,000 attendees from 60 countries. The technical program takes place Sunday, Jan. 22–Wednesday, Jan. 25, and includes paper presentations as well as non-paper presentations. Approved papers are published in ASHRAE Transactions. Held in conjunction with the ASHRAE conference is the ASHRAE-cosponsored AHR Expo, Jan. 23-25.

ASHRAE, founded in 1894, is an international organization of some 50,000 persons. ASHRAE fulfills its mission of advancing heating, ventilation, air conditioning and refrigeration to serve humanity and promote a sustainable world through research, standards writing, publishing and continuing education.

ASHRAE Funds Undergraduate Project on Net Zero Energy Design Toolkit

ATLANTA – A toolkit to help better understand the impacts of building construction related to net zero energy targets is being developed by undergraduate students in their senior year through an ASHRAE Undergraduate Senior Project Grant.

The grants, totaling some \$65,000, are awarded by ASHRAE to colleges and universities worldwide to promote the study and teaching of HVAC&R, encouraging undergraduate students to pursue related careers. The grants are used to design and construct projects.

This year, 14 schools from around the world were awarded grants, including the University of Oregon for its proposal to develop a net zero energy design toolkit. As the top grant award winner, two students from



Articles from ASHRAE's Public Relations Office

the university are invited to present their project as part of the Student Program at the 2012 ASHRAE Winter Conference in Chicago.

As the building industry looks toward more energy efficient design, with the eventual goal of net zero energy use, additional tools are needed. The toolkit being developed by students will help facilitate understanding of the impact of design decisions on the rising cost of energy and enhance dialogue between engineers, architects, contractors and building owners.

"The toolkit offers a three-tiered approach to investigate, evaluate and experience the impacts of building construction in achieving net zero energy targets related to design, construction and occupancy," Allison Kwok, faculty advisor and branch advisor for the University of Oregon Student Branch, said. "The approach is provided through pre-occupancy onsite investigations, post-occupancy audits of the existing building stock and through a professional workshop between local members and students."

The toolkit will include a building air tightness testing system as well as an infrared camera to detect moisture, missing or defective insulation, structural shortcomings, HVAC problem areas, sources of heat-

ing and cooling loss, plumbing blocks, roof leaves and electric issues.

The kit will be used for pre- and post-occupant audits followed by a workshop, where students will discuss their real experiences with building performance analyses dealing with topics such as occupant comfort, system effectiveness and energy use.

Other ASHRAE grant recipients are:

- University of Nebraska – Lincoln – CO₂-Based Demand Control Ventilation (DCV) of Multiple-Zones in a LEED™ Building
- UNC Charlotte – Advanced Cooling Technologies: Nanofluids Flow and Heat Transfer Lab
- Ryerson University – Design and Construction of a Compact Integrated Variable-Capacity Multi-Zone Air Handling Unit with HRV/ERV/Economizer for Super Energy Efficient/Net Zero Energy Houses
- Purdue University – Living Laboratory for Smart Home
- UET Lahore – Design and Fabrication of 1KW Solar Stirling Engine
- Bradley University – Design of a System for Regulating AC Capacity by Compressor Rapid Cycling
- National Taipei University of Technology – A Performance Study on Electric Powered Vehicle Air-Conditioning System
- American University of Beirut – The Use of Shading and Condensate Drain to Improve the Efficiency of a Residential-Sized DX Split Air Conditioning System in Beirut City
- Southern Illinois University - Carbondale – PCM Solar Energy Storage Demonstrator for Air and Water Heating
- Mapua University (team 2) – Development of a Laboratory Set-Up for a Ducted Underfloor Air Distribution System
- National Chin-Yi University of Technology – Development of a Demonstrator of Thermoelectric Cooler/Heater System for Biomedical Cold-Chain System: Design, Fabrication and Performance Testing
- University of Algarve – Development of a Hot-Wire Anemometry Multi-Channel System and an Air Velocity Sensors Calibration System
- Manipal University – Solar Liquid Desiccant Air Conditioning System

For more information on the grant program, visit www.ashrae.org/students. ASHRAE will begin accepting applications for the 2012-13 program in August 2011, with a December 2011 final deadline.

If you would like a copy of any of these articles please contact Blake Acton, Secretary, at bacton@victaulic.com



Articles from ASHRAE's Public Relations Office

ASHRAE, founded in 1894, is an international organization of some 50,000 persons. ASHRAE fulfills its mission of advancing heating, ventilation, air conditioning and refrigeration to serve humanity and promote a sustainable world through research, standards writing, publishing and continuing education.

Sustainability Knows No Borders: ASHRAE Annual Conference to Take Place in Montreal

ATLANTA—Montréal, known for bringing a bit of European charm to North America, blends cultures, languages and people from all over the world, culminating in a unique and vibrant joie de vivre. In the same way, the 2011 ASHRAE Annual Conference brings together members from all over the world to share their knowledge of HVAC&R.

The theme of the Conference, Sustainability Knows No Borders, serves as a reminder of ASHRAE's international reach. The Society's members bring different perspectives, design styles and experiences to the HVAC&R industry, but all work toward the same goal: Advancing HVAC&R.

New to the Conference Technical Program is the

Engineering Tools track that seeks to keep up with the fast pace of development in energy modeling and building information modeling programs. Programs include BIM calculations as applied to the ASHRAE HQ building; numerical models for predicting dispersion of exhaust stacks, environmental impacts of buildings, building material properties for reducing energy consumption, code compliance, incorporating acoustics into BIM and large public spaces; operation-oriented flexible building system modeling; an integrated project delivery medical center case study; HVAC design checklists that work; computational fluid dynamics; DOE's new buildings energy efficiency HUB; VAV system controls; inverse modeling tools; and energy audits.

The Tech Program also addresses alternative technologies and net zero buildings and balance those programs with HVAC&R applications. Additional tracks include Refrigeration; HVAC Systems; Professional Skills; and Commissioning.

The technical program begins Sunday, June 26, and ends Wednesday, June 29, with all sessions at the Hilton Montreal Bonaventure. Complete program details are available at www.ashrae.org/montreal.

The ASHRAE Learning Institute offers nine instructor-led training opportunities, including full-day seminars on ASHRAE Standard 90.1-2010 and Data Center Energy Efficiency. Half-day sessions cover Energy Management, High Performance Building Design, Using Standard 90.1 to Meet LEED® Requirements, ASHRAE Standard 62.1 and Project Management for Improved IAQ.

The Conference keynote speaker is Rob "Waldo" Waldman, a former combat pilot, businessman and authority on leadership and sales. While relaying his personal experiences as a combat fighter pilot and businessman, he makes a parallel that is memorable and exciting, bringing fighter-pilot energy to each illustration. The Plenary session takes place Saturday, June 25 at Fairmont Queen Elizabeth.

ASHRAE technical tours offer an inside view of how technology developed by members is practically applied in building environments. Tours at the Annual Conference include the Bell Center, home of the Montréal Canadiens; the Montréal Biodôme; and the Beauharnois Generating Station.

The ASHRAE Annual Conference takes place June 25-29. Register before May 31 to save; purchases of a full

If you would like a copy of any of these articles please contact Blake Acton, Secretary, at baconton@victaulic.com



Articles from ASHRAE's Public Relations Office

registration also receive the Montreal Virtual Conference. Visit www.ashrae.org/montreal for more information. The Fairmont Queen Elizabeth will serve as the headquarters hotel.

ASHRAE, founded in 1894, is an international organization of some 50,000 persons. ASHRAE fulfills its mission of advancing heating, ventilation, air conditioning and refrigeration to serve humanity and promote a sustainable world through research, standards writing, publishing and continuing education.



Save The Date!!!

The Annual ASHRAE Alaska Golf Tournament will be held on August 8, 2011.

Details on location and sponsorship opportunities to follow.

If you would like a copy of any of these articles please contact Blake Acton, Secretary, at bacton@victaulic.com



ASHRAE Alaska Chapter would like to Thank our Business Support

 <p>Alaska's Premiere Mechanical, Electrical, Plumbing and Telecommunications Engineering Firm</p> <p>Adams, Morgenthaler and Company, Inc.</p> <p>701 East Tudor Road, Suite 250—Anchorage, AK 99503</p>	<p><i>Serving All of Alaska</i></p> <ul style="list-style-type: none"> • Filtration • Heating • Plumbing • Ventilation  <p>3901 Spenard Road Anchorage, Alaska 99517-3002 Phone: (907) 248-0000 Fax: (907) 243-3206 www.akwinter.com</p> <p>Ruth Armstrong Cell: (907) 230-0219 e-mail: ruth@akwinter.com</p>
<p>Russel "Rusty" West Alaska Sales Manager</p>  <p>Office: 425-774-6602 Direct Line: 425-977-2139 Mobile: 206-909-3664 Fax: 425-775-2272</p> <p>Email: rwest@coleindust.com</p> <p>5924 - 203rd Street Southwest • Lynnwood • WA • 98036 Serving the Pacific Northwest for over 40 years</p>	<p>Architects • Engineers • Surveyors</p>  <p>Meet all your design needs in one place.</p>  <p>800.668.8919 www.designalaska.com</p>
 <p>JAMES P. SHELDON CO., INC. HVAC Manufacturer Representative</p> <p>201 E 54th Ave., Suite 100, Anchorage, AK, 99518 Phone 561-4747 fax 562-7473 www.jpsheldon.com</p> <p>Andrew Lee Rick Loewen</p>	<p>Jeff Robinson <i>Service & Installation Division Manager</i> jrobinson@klebsheating.com</p> <p>907 365 2500 fax 907 365 2540 www.klebsheating.com</p> <p>KLEBS Heating Plumbing Air Quality</p> <p>1107 E 72nd Avenue, Anchorage, Alaska 99518</p>
 <p>Featuring controls by: AUTOMATED LOGIC CORPORATION</p> <p>Jessi Cherry Sales Specialist</p> <p>Energy Management &</p> <p>Phone: (907) 279-3320 Fax: (907) 279-2369</p>	<p>Roth-Sirianni, LLC 8040 King Street Anchorage, AK 99518</p> <p>907-522-6699 • fax 907-522-1274</p> <p>Dennis F. Sirianni Manufacture's Representatives d.sirianni@alaska.com</p>
<p>R S A Engineering Inc. <i>Mechanical and Electrical Consulting Engineers</i></p>  <p>Alaskan Owned, Alaskan Operated Since 1983</p>  <p>Emerald Fitness Center</p> <p>© 2007 Kevin G. Smith</p> <p>2522 Arctic Boulevard, Anchorage, AK 99503 (907) 276-0521 (907) 276-1751 fax 191 E. Swanson Avenue, Wasilla AK 99551 (907) 357-1521 (907) 357-1751 fax www.rsa-ak.com or info@rsa-ak.com</p>	<p>STINEBAUGH & COMPANY</p> <p>5730 B Street • Anchorage, AK 99518 phone: 907.345.8021 • fax: 907.345.8022 www.stinebaugh.com</p> <p>Engineered HVAC Solutions for Alaska</p>



ASHRAE Alaska Chapter would like to Thank our Business Support

UDELHOVEN
Nick Pepperworth
Vice President
Mechanical Administrator
Project Manager



Oilfield System Services, Inc.
184 East 53rd Avenue
Anchorage, Alaska 99518-1222
www.udelhoven.com
Phone: 907-375-1561
Cell: 907-351-6114
Fax: 907-562-1880
Email: Npepperworth@udelhoven.com



BLAKE ACTON

3705 Arctic Blvd. #2429
Anchorage, AK 99503
Email: bacton@victaulic.com

Cell: 907/223-0261
Fax: 907/865-2439
Customer Care: 800/742-5842

This page will be continually updated. Please get your business card in for the year of 2011 -2012. Business cards run from June to June for \$100.00 per year.

Please send your photo-ready card to bacton@victaulic

Or if you would like to update your existing business card please contact Blake Acton.

ASHRAE Business Support Section

A S H R A E - A L A S K A C H A P T E R

The Alaska ASHRAE Chapter is in need of your support. We are looking for engineering firms, contractors, wholesalers, manufacturers, and rep firms to put your business card in the monthly newsletter. This will be an excellent reference for all in our community and will be viewed monthly by many people. The business cards will run on a 12 month cycle, June 2011 newsletter to June 2012 newsletter, but your card will be inserted in the next months news letter through June 2012 at no additional cost. We appreciate your support.

- Business Cards: \$100



For more information about placing a business card into the newsletter contact:

Blake Acton, Secretary at bacton@victaulic.com



Until Next Time...

It is starting to feel like golfing/fishing weather out there so I hope everyone is starting to take advantage of it. Get out and get some vitamin D.

I want to give a special thanks to last months meeting presenter, John Pepe who's presentation on "Engineers Without Borders - USA" was very interesting. I am sure this months presentation, by Gary Hile, on "Backflow Prevention" will be just as good.

On other notes please save the date of August 8th, 2011 as the ASHRAE - Alaska Chapter will be hosting our annual golf tournament. Time, location, and sponsorship opportunities to follow.

If you would like to feature your business card in the Business Support section of the Hot Gas By Pass please e-mail me with a photo-ready business card. The fee is \$100 per year and can either be paid at the monthly membership meetings or by mailing a check to:

ASHRAE Alaska Chapter
C/O Treasurer
PO BOX 240712

If you would like to change your existing business card in the Business Support section please contact me. This section is continually updated. Any business cards that are not renewed by June 1st will be removed from the next newsletter. Thank you for your timely consideration.

If there is anything you would like to share in the Hot Gas Bypass please feel free to contact me and I will make sure that it gets into the next Hot Gas By Pass. If you have any questions about the Hot Gas Bypass, please feel free to contact me at anytime.

Thank you,

Blake Acton
Secretary Alaska Chapter
(907) 223-0261
bacton@victaulic.com



ASHRAE-Alaska Chapter



Visit us on the web at:
www.alaska.ashraechapters.org

Hot Gas Bypass

Advancing HVAC&R to serve humanity and promote a sustainable world

May 2011



President's Message

Anchorage Meeting Information

Date: Thursday, May 19, 2011

Location:

The Westmark Hotel
720 West 5th Avenue

Social: 5:30 p.m.

Dinner: 6:00 p.m.

Program: 7:00 p.m.

““A New Central Plant with No
New Chillers!” - (“A Virtual
Central Chiller Plant”)”

Presented by:
Verle A. Williams

Members:

RSVP'd -\$30.00

Non-RSVP'd-\$35.00

Alaska Chapter

Officers/Chairs

Ruth Armstrong, President

ruth@akwinter.com

Jessi Cherry, Vice-President

jessi.cherry@msicontrols.com

Blake Acton, Secretary

bacton@victaulic.com

Randy Williams, Treasurer

rwill@amc-engineers.com

Greg Jernstrom, Interim Treasurer

rpete@amc-engineers.com

Eric Persson, Nominating Commit. Chair

epersson@msicontrols.com

Troy Nibert, Membership

tnibert@proctorsales.com

Jeff Hurd, Technology Transfer

Jeff.hurd@awwu.biz

Jim Christian, Resource Promotion

jchristian@udelhoven.com

Keith Reed, Historian

kreed@sstalaska.com

Wow!!! What a whirlwind of ASHRAE activities we have had over the last month!?!?! First there was the Webinar on April 21st on “Ground Source Heat Pump Systems” hosted by Coffman Engineers. Special thanks are due to Mr. Walter Heins for his assistance in setting up the webinar and hosting the presentation at his office.

Following the webinar we had a joint meeting with IAPMO in the evening with a special presentation from Mr. Gary Hile on “Backflow Prevention”.

Then not to be outdone, Mr. Jim Christian, Alaska RP Chairperson, organized, set up, ran and participated in our first ever “RP Shoot Out” at the Brichwood shooting range on Friday, April 22nd. A huge **THANK YOU** to Jimmy for putting the entire Shoot Out together. This was a huge undertaking that took a lot of time to plan, organize and present.

And last, but certainly not least, our annual Chapters Regional Conference was held May 11th thru the 14th in Portland, OR. A special thank you to our delegate, Jessi Cherry, and our alternate, Ginger Schaaf, for representing our chapter. Also I would like to take this opportunity to thank Troy Nibert, our Membership Chair, Mike Anderson, Student Activities Chair, Doug LeCren, Student Activities RVC, Jeff Hurd, CTTC Chair for their attendance and participation at CRC.

This month we are honored to have with us Mr. Verle A.

Williams, an ASHRAE Life Member and Fellow, a registered Professional Engineer, a Certified Energy Manager, a Commissioning Program Management Professional and a Certified Sustainability Development Professional, is the owner and president of Utility Services Unlimited (previously Verle A. Williams & Associates), a professional consulting firm specializing in energy efficient systems studies, design reviews, performance verification, peer reviews, and third party P.E. QA/QC assistance. Mr. Williams is a 1960 graduate of the University of Colorado at Boulder, with a BS in Mechanical Engineering, and a BS in Business. His presentation at our membership meeting will be on “Virtual Chiller Plants”, more details about this presentation are in the meeting announcement.

Mr. Williams will also be presenting a technical session from 3-5 pm on May 19th at the Westmark on “**Sustainability with A K-12 District-Wide Energy Efficiency Program**”. Anyone interested in attending the technical session, please contact Jessi as soon as possible to RSVP.

We will have a lot of ground to cover at this months meeting with our follow up to the CRC and the presentation by Mr. Williams so come early.

I hope you all can make it to the meeting, Thursday, May 19th at

6:00 at the Westmark Hotel.

Sincerely,
Ruth Armstrong
President, Alaska Chapter
ASHRAE
ruth@akwinter.com



May 2011 Program & Technical Session

“A New Central Plant with No New Chillers!” – (“A Virtual Central Chiller Plant”)

Presented by:

Verle A. Williams, P.E., CPMP, CEM, CSDP, FASHRAE

May's ASHRAE meeting will be presented by Verle A. Williams by Verle A. Williams an ASHRAE Distinguished Lecturer of San Diego, CA. He will be presenting on virtual chiller plants. Energy consumption of chiller plants often goes unchecked. This area has literally been a gold mine of conservation opportunities for 99% of the chiller plants visited. Starting with the pumping chiller plants visited. Starting with the pumping system, what pressure differential is there? What is needed in the buildings or air handlers served? What about the devices absorbing the pressure differential? Are they needed or is there another way to accomplish the goal?

Did you know that you can tie all those building chillers and pumping systems together, without adding pumps, to serve the entire campus cooling needs? Whether an office complex, an industrial complex, or a university campus, the entire cooling load can be met by the chiller(s) within any building connected to the loop. This permits only one chiller to supply the cooling needs of all the operating building systems during light load conditions. As the load increases, another chiller system is added. Energy savings will normally repay the cost of installing the piping system within a very reasonable time.

How about the control system? Are the pumps controlled as one element of an integrated control system, one that reads the needs of the devices served to determine the pump speed and pressure differential? Can the operator easily diagnose the total

plant operation from the control system central station? In case of an emergency, can one dial in and look at all systems from a laptop from off-site? Are the flow readouts reliable? Does the control system integrate directly with the chiller control system?

We hope to stir up some excitement within your mind, since this approach is not the most common – more so now than when this project started, however. So, come with an open mind and see where we can go with this “Virtual Chiller Plant”.

Verle Williams, an ASHRAE Life Member and Fellow, a registered Professional Engineer, a Certified Energy Manager, a Commissioning Program Management Professional and a Certified Sustainability Development Professional, is the owner and president of Utility Services Unlimited (previously Verle A. Williams & Associates), a professional consulting firm specializing in energy efficient systems studies, design reviews, performance verification, peer reviews, and third party P.E. QA/QC assistance. Mr. Williams is a 1960 graduate of the University of Colorado at Boulder, with a BS in Mechanical Engineering, and a BS in Business.

Mr. Williams' specialty for over 50 years has been automatic controls, their application to solve complex challenges, and their design for reliable and simplified operation, plus major Facilities' Energy Efficiency Studies and retrofit design and project management services. His consulting services have taken him into many complex facilities and challenged him to get "out of the box" and think about creative solutions that are outside the normal procedures and systems format.

Mr. Williams is very active in local, regional, and Society-level ASHRAE activities. He has received numerous awards through the years. He is an ASHRAE Distinguished Lecturer and past Director and Regional Chair of Region X, which placed him on the Society Board of Directors as a voting member. He is past President of the ASHRAE

College of Fellows, a separately incorporated body of ASHRAE Fellows, a group of less than 1% of the total ASHRAE membership. He is listed in Who's Who in Engineering and the World.

Verle is proud to be a family man: still married to his bride of nearly 54 years, father of 2 boys and a girl, grandfather of 4 girls and 6 boys, and great-grandfather of an 8 year old boy. He loves to help them dream big and watch them realize their dreams.

Verle will also be hosting a Technical Session at the WestMark from 3:00 pm-5:00 pm.

We will be meeting at the WestMark Hotel on 5 Avenue in downtown Anchorage on Thursday, May 19, I hope to see you there.

Technical Session: 3:00 pm-5:00 pm

Networking: 5:30 pm

Dinner and Meeting: 6:00 pm

Presentation: 7:00 pm

Please RSVP no later than Tuesday, May 17th, 2011 at noon. If you RSVP your cost will be \$30.00. If you do not, your cost will be \$35.00 at the door. If you RSVP, and do not show up, you will be charged \$35.00. We have to cover cost and RSVP's are very important. If you RSVP for this event, and find that you cannot attend, let me know as soon as possible and we will try to work with you.

Please RSVP to

Jessi Cherry

Vice President – Programs

jcherry@msicontrols.com

Don't forget to follow ASHRAE on your favorite media networks:

facebook

twitter



May 2011 Program & Technical Session

“Sustainability with A K-12 District-Wide Energy Efficiency Program”

Presented by:

**Verle A. Williams, P.E.,
CPMP, CEM, CSDP,
FASHRAE**

In 1994, the San Diego Unified School District was the 6th largest District in the Nation and second largest in California. The facilities management team realized they had not even considered their energy/utility issues, due to their “busyness” with the demanding issues of their day-to-day crises. They felt they needed to do something, but didn’t really know where to start. The boss called ASHRAE headquarters and the person answering the call introduced them to Verle as one who could either respond to their needs or introduce them to someone who could.

With their blank sheet of paper in hand, the Williams team was retained to mastermind an all inclusive program for them, which could be funded from the dollars saved by reducing their utility bill. There were to be no “sacred cows” in this District, so the team was instructed to leave no stone unturned. The initial task would be to determine the potential magnitude of the program and the projected annual utility cost avoidance. Then, identify potential funding sources available to them and see the program through implementation, including training the staff in their new responsibilities in operating their newly installed energy efficient equipment and systems.

Williams’ team identified the project budget at \$44 Million, with a simple payback of 8 years, based on reducing the utility bills by an aggressive 48%. Considering that many of the schools were not air conditioned and many of the heating systems weren’t operated during class because they are too noisy, and

that the tasks included replacing many of their old air handlers and inoperative equipment, this was considered to be a very aggressive but viable project! Although these replacements greatly reduced the repair labor cost, that savings was not factored into the project benefits on the balance sheet. The program even included landscaping irrigation, with a centralized sprinkler control system adjusted daily for the Evapo-Transpiration (ET) rate, thereby helping to reduce site water consumption by as much as 60-70%, while providing much greener lawns, with no “water running down the roadways.”

There were many training programs presented, including a District-wide “Energy Awareness Program” for the students, teaching staff, and parents.

This project – or probably more appropriately called “program” – was very successful. Actual monitored results showed the savings exceeded expectations and the total expenditures came in under budget. The benefits continue at the same high level to this day.

Come to the meeting to learn how the project was identified and implemented and how this major Public School District management was able to make it all happen.

The Technical Session will be held at the WestMark from 3:00 pm-5:00 pm.

We will be meeting at the WestMark Hotel on 5th Avenue in downtown Anchorage on Thursday, May 19, I hope to see you there.

Technical Session: 3:00 pm-5:00 pm

Please RSVP no later than Wednesday, May 18th, 2011 at noon. Please note this Technical Session is Free!

Please RSVP to Jessi Cherry

Vice President – Programs

jcherry@msicontrols.com

Don't forget to follow ASHRAE on your favorite media networks:

facebook

twitter



Research Promotion

ASHRAE
Research



Today's Challenges
Tomorrow's Solutions

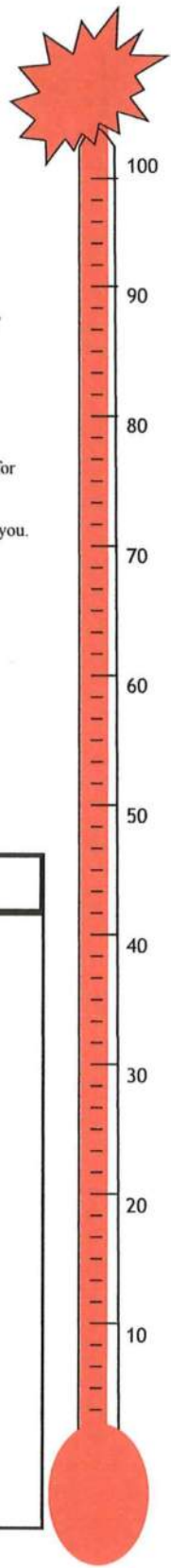
All,

Thanks to all of you who have supported RP. We are currently at 121% of our goal.

We had a very successful RP event in April. It was the RP shootout. In this event, we raised around \$1 800 dollars for RP. Thanks for those who participated and made it such a success.

We will have the highest amount raised over the past 10 years. In fact probably the most ever. We could not have done this without you. Thank You. I project that our final number will be over \$13 000. That will be over 144% of our goal. Simply Amazing!

Sincerely
Jim Christian
RP Chair



2010-2011 Research Investors, Alaska Chapter ASHRAE

<u>Organizations</u>	<u>Individuals</u>	<u>Individuals</u>
<p><u>\$1000 & Over</u> IAPMO</p> <p><u>\$500—\$999</u> Adams Morgenthaler & Co. Inc. Coffman Engineers, Inc PDC Inc. Engineers RSA Engineering Inc. The Superior Group Inc. Design Alaska Inc. Stinebaugh & Company Meridian Systems Inc.</p> <p><u>\$150—\$499</u> EDC Inc. Hay, Zietlow, and Assoc. LLC Proctor Sales Inc.</p> <p><u>Up to \$149</u> Murray & Associates Industrial Service Corporation Central Plumbing & Heating Inc.</p>	<p><u>\$1000 & Over</u> Robert Heym</p> <p><u>\$250—\$999</u> Ruth Armstrong Jessi Cherry Dan Fawcett Bob Whealy, PE Jan Van Den Top, PE John Fortner Eric Persson</p>	<p><u>\$100—\$249</u> Walter Heins Doug LeCren Scott Hala Jim Christian Randy Williams Blake Acton Ginger Schaaf Dave Duprow Brian Miller Lee Holmes, PE Boyd Morgenthaler W C Simmons Troy Nibert Doug Brandon Andrew Lee Jeremy Reed Mack Bergstedt Ron Handran</p> <p><u>Up to \$100</u> William Elam Russell West</p>





ASHRAE Student Chapter Report

As the school year is coming to an end the UAA student chapter has ended its year and will be back to its regular meetings in September 2011.

Please see the letter from Dr. Steffen Peuker on page seven regarding a short survey to be completed by our engineering community. Thank you for your participation in our survey.

Sincerely,

Michael D. Anderson

Student Activities

907.563.2242

mikeanderson@siemens.com



“ To the optimist, the glass is half full.

To the pessimist, the glass is half empty.

To the engineer, the glass is twice as big as it needs to be. ”

-Unknown

<u>Position</u>	<u>Name</u>	<u>E-mail</u>
Director & Region Chair	Erich Binder	erich.binder@worleyparsons.com
Assistant Regional Chair	Traci Hanegan	hanegan@coffman.com
Nominating Committee Member	Kevin Marple	kmurple@benzco.com
Nominating Committee Member	Norm Grusnick	ngrsnick@ecomfg.com
CTTC RVC	Eileen Jensen	nejensen@bpa.gov
Student RVC	Douglas LeCren	douglas.lecren@nanworleyparsons.com
Membership RVC	Russell Lavitt	rlavitt@smseng.com
Research Promotion RVC	Ray Sieber	sieber@src.sk.ca
Regional Historian	Tim McGinn	mcginnt@cohos-evamy.com
Regional Treasurer	Rob Craddock	rob@inlandmetal.ca
Regional Web Master	Kathy Habke	chapter.administrator@sac-ashrae.com
CRC 2010 Chair	Jerry Belanger	jclan@sasktel.net



Membership Report

Thank you to everyone that has maintained their dues and helped in growing our new members list to a all time high. Please note that on July 1, 2011, dues for Members and Associates will increase to \$185. Please contact membership@ashrae.org with any questions or concerns.

New member for this month is Curtis Holeman

I hope to see you all at this month's meeting.

Troy Nibert



CTTC Report

Continuing Education:

We are working on getting some seminars and technical sessions for those who need CEU's. Please keep me informed as to topics of interest so I can make arrangements for continuing education credits and to get presentations set up. If you have any questions please let me know.

Working on setting up some tours for the fall and Seminars.

Jeffery D. Hurd (CTTC)

Project Management/Civil Engineer I

Anchorage Water and Wastewater Utility

Work (907) 786-5526 Cell (907) 317-7285

Jeff.hurd@awwu.biz

If you would like a copy of any of these articles please contact Blake Acton, Secretary, at bacton@victaulic.com.



UAA School of Engineering
UNIVERSITY of ALASKA ANCHORAGE

May 6, 2011

To ASHRAE affiliated companies in the Anchorage area:

My name is Dr. Steffen Peuker and I am an Assistant Professor of Mechanical Engineering at UAA in the School of Engineering. I have been at UAA since January 2011, and I teach the Thermal System Design (ME A414) and HVAC Systems Optimization (ME A455) courses to undergraduate students whose major is mechanical engineering. As one responsible in the education of the next generation of HVAC&R engineers, my philosophy is that engineering education at the university level must provide the necessary fundamental knowledge to the students, as well as provide an opportunity to apply the fundamental knowledge to real life engineering problems. To achieve this second objective, I need your help.

In order to have a better understanding about the local HVAC&R industry and their needs, I would like to visit interested companies during the summer. Visiting and talking to engineers will help me to tailor the curriculum towards the needs of the local industry in the two HVAC&R courses I teach. Furthermore, a visit will enable me to gather ideas for possible projects/research projects. In addition, any ideas for possible projects from the industry are more than welcome; and are the best ideas for projects since you know your needs best.

Dr. Brock and myself are also developing a Thermal System Educational Laboratory at UAA, and I want to tailor the HVAC&R part of this laboratory towards the needs of the local industry. The laboratory will be used for both of the aforementioned courses and also for ME A441, Heat and Mass Transfer. As we develop and expand the laboratory, we also envision that the laboratory will be used for ASHRAE research projects. I welcome any comments regarding what types of hands-on education you perceive as important for our undergraduate students. In addition, if your company would like to donate equipment please contact me (right now we are looking for small scale equipment because of space limitations, but we will expand the laboratory in the coming years).

I greatly appreciate your input, and for this purpose please find a link to a short survey below.

<https://www.surveymonkey.com/s/FYGCKKC>

If you are interested in meeting with me during the summer (starting end of May) please send me an email.

Thank you,

Steffen Peuker, Ph.D.

Assistant Professor of Mechanical Engineering

University of Alaska Anchorage

3211 Providence Drive

Anchorage, AK 99508

Office: ENGR 319

Phone: 907 786 6193

email: speuker@uaa.alaska.edu

**2011 VERN G. WINTER MEMORIAL
GOLF TOURNAMENT**



August 19, 2011 7:00am

Anchorage Golf Course

3651 O'Malley Rd

\$100 / player

Charge card: VISA/MC only

Name on Card: _____

Card # _____ exp: _____

Credit card Billing Zip code _____

Security code _____

4 player Team:

- Circle One: Hole Sponsor \$100
 Lunch Sponsor \$500
 Beverage Cart Sponsor \$250
 Hole In One Sponsor \$500

Sponsor: _____

Team contact e-mail:

**Signup
ASAP for
guaranteed
spot**

Please e-mail, fax or mail Entries to:
thompsonrj@muni.org Ron Thompson
Fax # 249-7412 11875 Rockridge drive
 Anchorage, Ak 99516



Articles from ASHRAE's Public Relations Office

Briefings, Congressional Visits Featured in High-Performance Building Week

ATLANTA—The human, environmental, economic and total societal impact of high performance buildings is recognized during High-Performance Building Week, May 23-29.

The High-Performance Building Congressional Caucus Coalition (HPBCCC), established by ASHRAE, will highlight the importance of high-performance buildings to federal, state and local policymakers and the general public.

"We have a growing stock of high-performance buildings that provide a healthy environment and use less energy, water, and other resources than conventional buildings," ASHRAE President Lynn G. Bellenger said. "Highlighting these achievements will promote integrated design practices and accelerate the transformation of our design and construction approach from minimum code compliance to high-performance buildings."

Events for the week will kick off on Tuesday, May 24, with a Congressional press event, held at 9:30 a.m. in 2325 Rayburn House Office Building. Press may contact Amanda Dean, adcan@ashrae.org to register to attend.

A luncheon will also be held that day. "Introduction to High-Performance Buildings: How Buildings Keep Americans Safe, Grow the Economy and Protect the Environment" will be held from 11:30 a.m. to 1 p.m. on May 24, 2325 Rayburn House Office Building. Representatives Judy Bigert (R-Ill.) and Russ Carnahan (D-Mo.), who serve as co-chairs of the High-Performance Buildings Caucus, have been invited to make

the welcoming remarks.

Speakers include ASHRAE President Lynn G. Bellenger, P.E., as well as representatives from the Institute for Market Transformation, the International Code Council, the National Institute of Building Sciences and the U.S. General Services Administration, among others. Panelists will discuss how high-performance buildings impact jobs, the economy, environment, safety and security, as well as what "high-performance building" means in practice and what it takes to get there.

Additional activities in Washington, D.C., include a Congressional budget briefing featuring perspectives from the House Tea Party Caucus and Congressional Progressive Caucus, May 25; site visits, such as a tour of American University's energy efficiency retrofits, May 25; a discussion on LEED® certification at the National Building Museum, May 26; and a tour and reception at the American Society of Landscape Architects Congressional Green Roof, also May 26.

At the state and local level, members of the building community are encouraged to celebrate the week through public outreach and contact with public officials. Members of the HPBCCC participating organizations are asked to contact their Member of Congress by phone and e-mail and encourage them to join the High-Performance Buildings Congressional Caucus. Tips and resources for getting in touch with local representatives can be found at www.hpbccc.org/hpbweek.

Guide for Achieving Advanced Energy Savings Published by Industry Leaders

ATLANTA – Guidance to get

you at least halfway to achieving net-zero-energy design is now available from leading industry organizations in a new publication.

Advanced Energy Design Guide for Small to Medium Office Buildings: Achieving 50% Energy Savings Toward a Net-Zero-Energy Building is the first book in a series of Advanced Energy Design Guide (AEDG) publications that provides recommendations to achieve 50 percent energy savings when compared with the minimum code requirements of ANSI/ASHRAE/IESNA Standard 90.1-2004, Energy Standard for Buildings Except Low-Rise Residential Buildings. The book was developed by a committee representing a diverse group of energy professionals drawn from ASHRAE, the American Institute of Architects (AIA), the Illuminating Engineering Society of North America (IES), the Department of Energy (DOE) and the United States Green Building Council (USGBC).

The series follows the earlier six-book series that provided guidance to achieve 30 percent savings. The ultimate goal is to provide guidance to achieve net-zero-energy buildings, that is buildings that produce more energy than they consume.

"This guide will help in the design of new office buildings and major renovations that consume substantially less energy compared to the minimum code-compliant design, resulting in lower operation costs," Bing Liu, chair of the 50% AEDG project committee, said. "Of equal importance is that energy-efficient build offer a great possibility to enhance the working environment, including indoor air quality, thermal comfort and natural lighting."

If you would like a copy of any of these articles please contact Blake Acton, Secretary, at bacton@victaulic.com



Articles from ASHRAE's Public Relations Office

A significant addition to the new 50 percent guide is the inclusion of a performance path; specifically, offering guidance for early stage energy modeling.

"Whole-building energy modeling programs can provide more flexibility to evaluate the energy-efficient measures on an individual project," Liu said. "Simulation programs have learning curves of varying difficulty, but energy modeling for office design is highly encouraged and is considered necessary for achieving energy savings of 50 percent."

The groups note that meeting the 50 percent energy savings goal is challenging and requires more than doing business as usual. The Guide offers eight essentials to achieve advanced energy savings:

- Obtain building owner buy-in
- Assemble an experienced, innovative design team
- Adopt an integrated design process
- Consider a daylighting consultant
- Consider energy modeling
- Use building commissioning
- Train building users and operations staff
- Monitor the building

ASHRAE, AIA, IES, DOE and USGBC are currently developing the second guide in the 50 percent series, which will focus on K12 schools. Publication is targeted for fall of 2011, followed by a guide for medium/big box retail in the winter of 2012 and large hospitals in the spring of that year.

Advanced Energy Design Guide for Small to Medium Office Buildings: Achieving 50% Energy Savings Toward a Net-Zero-Energy Buildings is available as a free download at

www.ashrae.org/freecadg. A print version is available for \$82 (\$69, ASHRAE members). To order, contact ASHRAE Customer Service at 1-800-527-4723 (United States and Canada) or 404-636-8400 (worldwide), fax 404-321-5478. Bulk discounts are available to individuals, companies and organizations who are interested in purchasing multiple copies.

Call for Presenters

ASHRAE Announces High Performance Buildings Conference

ATLANTA – Building upon its 2009 Net-Zero Energy Conference, ASHRAE seeks to advance the industry's efforts to change the energy-use aspects of the built environment through its High Performance Buildings Conference: A Focus on Deep Energy Savings, March 12-13, 2012 in Mission Valley, Calif.

This conference will guide building design professionals, building owner/managers, building operating staff and government officials about what works and what doesn't when tackling major improvements in energy efficiency, renewable applications and operating practices. With an attendance limited to 300, the conference will allow an exchange of ideas and dialogue to facilitate understanding of current energy saving efforts, share best practices and to establish an action plan to substantially improve energy efficiency in buildings.

The conference will offer two tracks: 1) a technical applications track focusing on strategies, technologies, tools, meas-

ured performance and optimal operations, and 2) a policy track with a focus on current and future legislation and related programs in the areas of standards, performance rating and labeling, disclosure laws, etc. The conference's target facilities include both existing and new construction non-residential buildings. Case studies, especially from the region, are requested.

Call for Presenters

Presentation abstracts (300-500 words) are requested on the following topics:

- Applications results
- Energy audits
- Commissioning
- Benchmarking of utility consumption
- Economics, design and construction, and
- Energy efficiency strategies
- Building envelopes
- Lighting and daylighting
- Passive
- HVAC
- Plug loads

Presentation proposals are due July 15, 2011. Decisions on presentation proposals will be sent in August 2011.

For more information or to submit a presentation proposal, visit www.ashrae.org/HPBconference.

If you would like a copy of any of these articles please contact Blake Acton, Secretary, at bacton@victaulic.com



Articles from ASHRAE's Public Relations Office

ASHRAE Seeks to Reduce Heat Island Effect through Proposed Changes to Green Building Standard

ATLANTA – Requirements to reduce heat and subsequent energy use on building sites are proposed for the green building standard developed by ASHRAE, IES and USGBC.

Five proposed addenda to Standard 189.1-2009, *Standard for the Design of High-Performance, Green Buildings Except Low-Rise Residential Buildings*, currently are open for public comment. To learn more or to comment, visit www.ashrac.org/publicreviews.

Developed by ASHRAE in conjunction with the Illuminating Engineering Society of North America (IES) and the U.S. Green Building Council (USGBC), the standard provides a long-needed green building foundation for those who strive to design, build and operate green buildings.

Addendum *k* updates portions of section 5 (Site Sustainability) to improve requirements related to tree-growth rate and adds a mandatory requirement restricting invasive plants. The change extends the tree growth period to 10 years from five years.

“Ten years accounts for a wider diversity of trees across geographic regions to achieve a canopy that provides effective shading,” Dennis Stanke, committee chair, said. “The current requirement of five years favors fast-growing trees, which may be more likely to lack stability in

storms and to die at a relatively young age.”

In addition to addendum *k*, addendum *n* is open for public comment until June 20, 2011.

Addendum *n* improves the heat island reduction provisions in sections 5 (Site Sustainability) to include aged values for solar reflective index and to include a reference to the Cool Roof Rating Council ANSI Standard. It also modifies the solar reflectance and emittance values in Normative Appendix D (Performance Option for Energy Efficiency).

Three addenda are open for public comment until June 5, 2011.

Addendum *l* updates portions of section 5 (Site Sustainability), treating porous pavers and open graded aggregate, all of which mitigate the heat island effect, separate from other paving materials. Studies have shown that porous and permeable pavement systems store less energy and therefore less heat when exposed to sun over an extended period of time. The heat is not absorbed and therefore not emitted back into the environment, which results in lower daytime and nighttime temperatures.

Addendum *m* clarifies condensate collection requirements in Section 6 (Water Use Efficiency), exempting dry climates where little if any condensate would be expected from

air-conditioning units.

Addendum *o* adds a mandatory requirement to section 5.3 (Site Sustainability) to provide pedestrian friendly environments through the use of designated walkways. Vehicles negatively impact the environment through the generation of air pollution, traffic congestion and issues associated with oil extraction and petroleum refining. The use of alternative modes of transportation helps reduce the energy demand for transportation and associated greenhouse gas emissions.

“Requirements for pedestrian friendly environments help encourage transit use and support bicycle mobility, both of which increase physical exercise opportunities and associated health benefits,” Stanke said.

Standard 189.1 also serves as jurisdictional compliance option to the International Green Construction Code authored by the International Code Council, ASTM International and the American Institute of Architects.

ASHRAE Urges Congress to Continue Funding for Important Building Data Survey

ATLANTA—The recent announcements regarding the U.S. Energy Information Administration's (EIA) decision to not release the results of the 2007 Commercial Buildings Energy Consumption Survey (CBECS), and to halt work on



Articles from ASHRAE's Public Relations Office

the 2011 edition of the Survey, have prompted ASHRAE to request action.

EIA has opted not to release the 2007 CBECs results—a national sample survey that collects information on the stock of U.S. commercial buildings, their energy-related characteristics, energy consumption and expenditures—and has suspended work on a 2011 Survey due to statistical issues and funding cuts, respectively.

ASHRAE has issued a letter strongly urging Congress to include funding for CBECs in the Fiscal Year 2012 appropriations bills to allow work on the 2011 edition of the Survey to continue. This is particularly important in light of the 2007 CBECs data discrepancies.

"Information from CBECs plays a critical role in building energy efficiency through the many federal and private sector programs that use the Survey's data in their efforts to establish benchmark levels and promote energy efficient practices, including ASHRAE's Building Energy Quotient (Building eQ) program," Lynn G. Bellenger, P.E., ASHRAE president, said. "Additionally, many of ASHRAE's committees depend upon CBECs to help develop some of the standards in use by the federal government, states and local jurisdictions."

Currently, the latest version of CBECs data is from 2003. If funding is not provided, work on the 2011 CBECs data will not continue, and the government and industry will be forced to rely on data that is nearly a decade old and in need of revisions and enhance-

ments, resulting in potential missed opportunities to increase building efficiency and reduce energy use.

Expanded Data Center Classes, Guidance Provide More Data Center Energy Efficiency Options

ATLANTA – Since the publication of ASHRAE's Thermal Guidelines for Data Processing Environments in 2004, there has been a continued focus on providing guidance to datacenter operators regarding how to best maintain high reliability while operating their facilities in the most energy efficient manner.

In a new whitepaper, "2011 Thermal Guidelines for Data Processing Environments – Expanded Data Center Classes and Usage Guidance," published by ASHRAE Technical Committee (TC) 9.9, Mission Critical Facilities, Technology Spaces and Electronic Equipment, a roadmap has been outlined to facilitate a significant increase in the operational hours during which economizer systems are able to be used, and to increase the opportunity for datacenters to become "chillerless," eliminating mechanical cooling systems entirely, in order to realize improved Power Usage Effectiveness (PUE). The Green Grid created the popular PUE metric that is widely used to compare the total power to the IT power.

The major change that is introduced in the whitepaper is the addition of two new datacenter classes. The classes have been added primarily for facilities that are willing to explore the

tradeoffs associated with the additional energy saving of the cooling system through increased economizer usage and what that means in terms of the impact to IT Equipment attributes such as reliability, internal energy, cost, performance, contamination, etc.

"This whitepaper is truly ground-breaking in that it achieves alignment between representatives of the major IT equipment manufacturers on wider environmental tolerances for IT equipment while providing guidance and a methodology for owners and operators to optimize the operating environment of their datacenter based on the criteria most important to their business needs," Don Beaty, chair of the Publications Subcommittee for TC 9.9, said. "In order to most quickly meet the current demands of the industry, we are using a two-step approach to introduce this important information sooner rather than later. The information in this whitepaper will be incorporated into the third edition of the Thermal Guidelines publication."

The whitepaper can be obtained from www.tc99.ashraetcs.org.

In other datacenter related news, the third edition of the ASHRAE datacom book, "Thermal Guidelines for Data Processing Environments" is scheduled for publication later this year.



Articles from ASHRAE's Public Relations Office

**ASHRAE 2010 BACnet®
Published**

ATLANTA – A large collection of new technologies for emerging applications is contained in ASHRAE's newly published BACnet standard.

ANSI/ASHRAE Standard 135-2010, BACnet – A Data Communication Protocol for Building Automation and Control Networks, allows building equipment and systems manufactured by different companies to work together. It is the only open, consensus-developed standard in the building controls industry. The new standard contains 19 addenda approved since the 2008 standard was published.

"The 2010 version of the standard represents a large amount of work in a short amount of time by the BACnet committee," Dave Robin, committee chair, said. "In just two years, the committee has added a wide variety of new technologies and contributed more than 400 pages to the standard."

The standard contains several new ways to communicate: wireless communications is provided for applications where wired networks are impractical or expensive; a new XML vocabulary is provided for complex standard and proprietary data and metadata; a new character encoding method is provided for greater flexibility and compatibility with international text; and new state-of-the-art network security is defined to allow the creation of highly secure communications channels for sensitive data.

It also adds:

- higher speeds for MS/TP

networks and wiring guidance for optically isolated segments

- new requirements for workstations and the definition of new kinds of workstations
- new engineering units to support smart grid and other emerging applications
- a new Global Group object for gathering, monitoring and distributing sets of data
- six new objects to support physical access control
- 12 new objects to support the full complement of all data types, including strings

The cost of ANSI/ASHRAE Standard 135-2010, BACnet – A Data Communication Protocol for Building Automation and Control Networks, is \$170 (\$140 ASHRAE members).

To order, contact ASHRAE Customer Service at 1-800-527-4723 (United States and Canada) or 404-636-8400 (worldwide), fax 404-321-5478, or visit www.ashrae.org/bookstore.



ASHRAE Alaska Chapter would like to Thank our Business Support

 <p>AMC ENGINEERS Alaska's Premiere Mechanical, Electrical, Plumbing and Telecommunications Engineering Firm</p> <p>Adams, Morgenthaler and Company, Inc.</p> <p>701 East Tudor Road, Suite 250—Anchorage, AK 99503</p>	<p>Serving All of Alaska</p> <ul style="list-style-type: none"> • Filtration • Heating • Plumbing • Ventilation  <p>ALASKA WINTER, INC. MANUFACTURERS' REPRESENTATIVE</p> <p>3901 Spenard Road Anchorage, Alaska 99517-3002 Phone: (907) 248-0000 Fax: (907) 243-3206 www.akwinter.com</p> <p>Ruth Armstrong Cell: (907) 230-0219 e-mail: ruth@akwinter.com</p>
<p>Russel "Rusty" West Alaska Sales Manager</p>  <p>Office: 425-774-6602 Direct Line: 425-977-2139 Mobile: 206-909-3664 Fax: 425-775-2272</p> <p>Email: rwest@coleindust.com</p> <p>5924 - 203rd Street Southwest • Lynnwood • WA • 98036 Serving the Pacific Northwest for over 40 years</p>	<p>Architects • Engineers • Surveyors</p>  <p>Meet all your design needs in one place.</p>  <p>800.668.8919 www.designalaska.com</p>
 <p>JAMES P. SHELDON CO., INC. HVAC Manufacturer Representative</p> <p>201 E 54th Ave., Suite 100, Anchorage, AK, 99518 Phone 561-4747 fax 562-7473 www.jpsheldon.com</p> <p>Andrew Lee Rick Loewen</p>	<p>Jeff Robinson Service & Installation Division Manager jrobinson@klebsheating.com</p> <p>907.365.2500 fax 907.365.2540 www.klebsheating.com</p> <p>KLEBS Heating Plumbing Air Quality</p> <p>1107 E 72nd Avenue, Anchorage, Alaska 99518</p>
 <p>MERIDIAN SYSTEMS, INC.</p> <p>Featuring controls by: AUTOMATED LOGIC CORPORATION</p> <p>Jessi Cherry Sales Specialist</p> <p>Energy Management &</p> <p>Phone: (907) 279-3320 Fax: (907) 279-2369</p>	<p>Roth-Sirianni, LLC 8040 King Street Anchorage, AK 99518 907-522-6699 • fax 907-522-1274</p> <p>Dennis F. Sirianni Manufacture's Representatives d.sirianni@alaska.com</p>
<p>R S A Engineering Inc. Mechanical and Electrical Consulting Engineers</p>  <p>Alaskan Owned, Alaskan Operated Since 1983</p>  <p>Emerald Fitness Center</p> <p>© 2007 Kevin G. Smith</p> <p>2522 Arctic Boulevard, Anchorage, AK 99503 (907) 276-0521 (907) 276-1751 fax 191 E. Swanson Avenue, Wasilla AK 99651 (907) 357-1521 (907) 357-1751 fax www.rsa-ak.com or info@rsa-ak.com</p>	<p>STINEBAUGH & COMPANY</p> <p>5730 B Street • Anchorage, AK 99518 phone: 907.345.8021 • fax: 907.345.8022 www.stinebaugh.com</p> <p>Engineered HVAC Solutions for Alaska</p>



ASHRAE Alaska Chapter would like to Thank our Business Support



UDELHOVEN
Nick Pepperworth
Vice President
Mechanical Administrator
Project Manager

Oilfield System Services, Inc.
184 East 53rd Avenue
Anchorage, Alaska 99518-1222
www.udelhoven.com
Phone: 907-375-1561
Cell: 907-351-6114
Fax: 907-562-1880
Email: Npepperworth@udelhoven.com



BLAKE ACTON

3705 Arctic Blvd. #2429
Anchorage, AK 99503
Email: bacton@victaulic.com

Cell: 907/223-0261
Fax: 907/865-2439
Customer Care: 800/742-5842



Troy Nibert
Sales Representative
Anchorage, AK Location
tnibert@proctorsales.com
Cell: 907-223-8830
Main: 907-562-2608
Fax: 907-562-0503

www.proctorsales.com

ASHRAE Business Support Section

ASHRAE - ALASKA CHAPTER

The Alaska ASHRAE Chapter is in need of your support. We are looking for engineering firms, contractors, wholesalers, manufacturers, and rep firms to put your business card in the monthly newsletter. This will be an excellent reference for all in our community and will be viewed monthly by many people. The business cards will run on a 12 month cycle, June 2011 newsletter to June 2012 newsletter, but your card will be inserted in the next months news letter through June 2012 at no additional cost. We appreciate your support.

- Business Cards: \$100

For more information about placing a business card into the newsletter contact:
Blake Acton, Secretary at bacton@victaulic.com





Until Next Time...

With summer days getting longer and the sun actually getting some warmth to it, get out and enjoy it.

I want to give a special thanks to last months meeting presenter, Gary Hile who's presentation on "Backflow Prevention" was both interesting and informative. I am sure this months presentation, by Verle A. Williams, on Virtual Central Chiller Plants, will be just as good.

On other notes please save the date and get your sponsorship form in, as the ASHRAE - Alaska Chapter will be hosting our annual golf tournament. It will be held at the Anchorage golf Course on the 19th of August and will start promptly @ 7:00am.

Speaking of sponsorship, if you would like to feature your business card in the Business Support section of the Hot Gas By Pass please e-mail me with a photo-ready business card. The fee is \$100 per year and can either be paid at the monthly membership meetings or by mailing a check to:

ASHRAE Alaska Chapter
C/O Treasurer
PO BOX 244503

Anchorage, AK 99524-4503

If you would like to change your existing business card in the Business Support section please contact me. This section is continually updated. Any business cards that are not renewed by June 1st will be removed from the next newsletter. Thank you for your timely consideration.

If there is anything you would like to share in the Hot Gas Bypass please feel free to contact me and I will make sure that it gets into the next Hot Gas By Pass. If you have any questions about the Hot Gas Bypass, please feel free to contact me at anytime.

Thank you,

Blake Acton
Secretary Alaska Chapter
(907) 223-0261
bacton@victaulic.com



ASHRAE-Alaska Chapter



Visit us on the web at:
www.alaska.ashraechapters.org