



September 2017

Alaska Chapter Newsletter Hot Gas Bypass

Anchorage Meeting Information

Presentation:

Best Practices for Protecting a VFD from Your Facility and Your Facility from the VFD

By: Ken Fonstad

Date:

Thursday,
September 21, 2017

Time:

5:30 pm: Check-in
6:00 pm: Dinner
6:30 pm: Presentation

Location:

The Boardroom
601 W. 5th Avenue, Floor 2
Anchorage, AK 99501

Cost:

Members: \$35

Alaska Chapter Officers and Chairs

Craig Rohwer, President

Craig.Rohwer@irco.com

Nathan Zeigler, President-Elect

Nathan.Zeigler@contractor.conocophillips.com

Tracy McKeon, Secretary

tmckeon@crweng.com

Cheyenne Alabanzas, Treasurer

calabanzas@rsa-ak.com

Ruth Armstrong, Grassroots Gov. Advocacy

rarmstrong@ak.net

Doug Franklin, Membership

dfranklin@stinebaugh.com

Brian Johnson, Student Activities / YEA

rbjohnson13@gmail.com

Jeff Hurd, Technology Transfer

Jeff.hurd@awwu.biz

Mak Kampen, Research Promotion

Matthew.Kampen@conocophillips.com

Jan Van Den Top, Historian

janvdtop@acsalaska.net

Alaska ASHRAE Chapter
PO Box 244503
Anchorage, AK 99524

President's Message:

Welcome back Alaska Chapter Members to another great program year!

I hope all of you had a safe and adventure filled summer. I'd like to thank our former President **Mak Kampen** for his dedication and leadership during the 2016-2017 ASHRAE year. His volunteered time was invaluable in helping our Chapter succeed. Thank you Mak!

Nate Zeigler has been moving forward with producing a stellar year of programs. Did you know ASHRAE isn't just about technical development and education, but also professional, personal and in our communities? We'd like to branch out and offer several community and professional development options to better serve you our Members! More details on these exciting opportunities will follow.

To start our exciting new year, we have Ken Fonstad with ABB joining us and discussing the field of VFD's: *Best Practices for Protecting a VFD from Your Facility and Your Facility From the VFD*. This should be a great topic as VFD's are becoming an easy solution for energy management in new and existing buildings.

Our current year ASHRAE Society President, Bjarne W. Olesen, has coined to slogan "Extending Our Community". This follows with the past several years' strategic plans of "Connect", "Adapt", and now "Extend". This is through extending our Global Community (57,000 members with 20% outside North America!), Extending our technological horizons (bridging economic and international borders), and extending value to our Members (connecting chapters and student branches across regions and other countries). Please contact me if you have ideas on how we as a chapter can extend our growth and connect with others!

I want to thank **Ruth Armstrong** and the golf committee team for putting together another excellent golf tournament! As the past years, it starts with rain and moves to sunshine! Thank you each of you for all the time volunteered make this event successful.

All our yearly events are organized and run by volunteers from our Chapter and community. We're always looking for more to help and bring new ideas to build and grow our Chapter. Please let myself or another officer know if you're interested in helping our team.

I look forward to this next year as your Chapter President and working with each of you at our meetings and events and around town.
Best Regards,

Craig Rohwer
President, Alaska Chapter ASHRAE
craig.rohwer@irco.com



Anchorage September Meeting:

Presentation:
**Best Practices for
 Protecting a VFD from Your
 Facility and Your Facility
 from the VFD**

By: Ken Fonstad

Date:
**Thursday,
 September 21, 2017**

Time:
**5:30 pm: Check-in
 6:00 pm: Dinner
 6:30 pm: Presentation**

Location:
**The Boardroom
 601 W. 5th Avenue
 Anchorage, AK 99501**

Cost:
Members: \$35

RSVP:
**Please RSVP to Nathan
 Zeigler at
[Nathan.Zeigler@contractor
 .conocophillips.com](mailto:Nathan.Zeigler@contractor.conocophillips.com)
 By noon on Wednesday
 September 20th**

Ken Fonstad graduated from the University of Wisconsin—Parkside with Bachelor of Science degrees in Physics and Mathematics and from the University of Wisconsin—Milwaukee with a Master's of Science degree in Environmental Engineering.

Ken has:

- Taught Physics and Mathematics at the high school and college level.
- Served as the Training Manager for Danfoss and their predecessor, the Graham Company.
- He is currently the HVAC Sales and Application Support Principal Engineer for ABB.

Ken is a member of:

- The American Association of Physics Teachers.
- The Hydraulic Institute , where he has served on a number of committees and has provided input to the Application Guideline for Variable Speed Pumping.
- AHRI (The Air-Conditioning, Heating and Refrigeration Institute), where he chairs the AHRI Variable Frequency Drive Section and worked on developing ANSI/AHRI Standards 1210 and 1211, Performance Rating of Variable Frequency Drives.
- ASHRAE, where he is a member of Technical Committee 1.11, Electric Motors and Motor Controls, SPC 222P, Standard Method of Test for Electrical Power Drive Systems, and has provided input to Chapter 45, Motors, Motor Controls, and Variable Frequency Drives, of the ASHRAE Handbook: HVAC Systems and Equipment.

Ken has made presentations on various aspects of variable frequency drives and their application to various organizations, including the Hydraulic Institute, ASHRAE chapters and national meetings, meetings of the Montana Joint Engineering Council, and the Tennessee Valley Public Power Association.

We are excited to host Ken and are looking forward to learning from his vast knowledge and experience with VFD's. We hope to see you there!

Please confirm early!

Research Promotion:

2017-2018 Research Investors, ASHRAE Alaska Chapter

Organizations	Individuals	Up to \$99 Scott Bell
\$1000 & Over	\$1000 & Over	
\$500—\$999	\$250—\$999	
\$150—\$499	\$100—\$249 Nathan Zeigler Tracy McKeon Greg Jernstrom Doug LeCren Mak Kampen	
Up to \$149		

Fellow ASHRAE Members,

We are off to a strong start with raising money for ASHRAE Research with the generous support of the investors listed above, as well as the successful golf tournament fundraising games. This years' golf tournament RP games included mulligan sales, card draw ball drop, and a carnival-style putting challenge. A special thanks to **Ruth Armstrong, Jan van den Top, Brian Miller, Tracy McKeon, and Nathan Zeigler** for helping plan and run the tournament and the games!

ASHRAE Research is essential to updates that are made to the Society's standards and guidelines, which provide uniform methods of testing for rating purposes. The standards and guidelines suggest safe practices for design and installation and provide other information which guides the industry. Every dollar that is donated goes to ASHRAE Research! 100%!

If you are interested in donating towards the future of HVAC&R industry standards and practices please follow one of these three donation options:

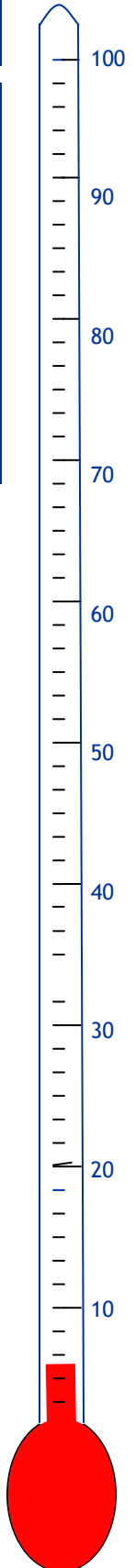
- Go to <http://www.ashraerp.com> and click on "donate".
- You can mail a check made out to "ASHRAE Research" please put "Alaska Chapter" in the memo line and mail to: ASHRAE Research 1791 Tullie Circle, NE, Atlanta, GA 30329.
- You can donate when you renew your membership on line. After you have made your selections for renewal the next page is for you to donate to ASHRAE funded items. About 3/4 of the way down the page you will see Research Promotion. Click "Add to Cart"

If you have already made a donation, your name should appear at the top of this page, if not, it should appear next month. Please feel free to contact me if your name is not present below and you made a donation or with any questions about ASHRAE Research Promotion; the ASHRAE Foundation; or the ASHRAE Learning Center.

Thank you very much for all of your support and dedication to your local ASHRAE Chapter.

Sincerely,

Mak Kampen, P.E.
Alaska Chapter Research Promotion Chair
Matthew.kampen@conocophillips.com



ASHRAE/ AMCA Golf Tournament 2017



Thank you to all our sponsors this year including: Aaron Plumbing and Heating Company, Alaska Air Balance, CRW Engineering, Trane, RSA Engineering, Proctor Sales, Coffman Engineers, Jernstrom Engineering, Last Frontier Mechanical, Long Building Technologies, Meridian Systems Inc, Siemens Industry, Mechanical Contractors of Fairbanks, Superior Plumbing & Heating, James P Sheldon, Mechanical Sales, Stinebaugh & Company, and MBA Consulting Engineers!

Feedback/Involvement Opportunities:

ASHRAE Members,

We need your feedback and involvement!

The 2017/2018 year is shaping up to be a very good year and we are excited to be able to offer you a number of interesting and relevant meeting topics. Please mark your calendars for the third Thursday of every month (with the exception of December) for our monthly meetings. We are working to complete our program planning for this year and would like feedback from you on topics of interest, or industry training opportunities that would be beneficial for you. Are there any HVAC topics or other industry related areas that you would like to know more about? Do you have ideas in how our local Alaska ASHRAE chapter can serve as a better resource for you and your business?

ASHRAE is here as a resource for you, to aid you in your professional and personal lives. In order to be most effective in serving you, we need your feedback in how to best tailor our programs and resources. If you have any comments, suggestions, or ideas for meeting topics / venues or other community involvement please e-mail me at Nathan.Zeigler@Contractor.conocophillips.com.

Thank you for supporting ASHRAE and contributing to our collective success!

Sincerely,

Nathan Zeigler
ASHRAE Alaska Chapter President-Elect
HVAC/Mechanical Engineer
907.263.3135



Student Activities:

Hello everyone,

I hope you all had a great summer and are ready for the return of our monthly meetings. This year for student activities we are going to have a renewed focus on the university students. We hope to be able to get the Student Chapter going at UAA this year as well as being able to send a student (UAA or UAF) to the Winter Conference in January. There will be more to come on this later.

I would also like to inform you all of this exciting news for the Anchorage School District. This past school year, Campbell Elementary School, petitioned the Anchorage School District to become the first STEM school here in Anchorage. ASD accepted this proposal and now Campbell has moved their curriculum to focus on STEM and STEM related activities and will eventually apply for certification with the state Alaska to become the first STEM charter school in the state. Unfortunately, ASD was not able to completely fund Campbell's planned STEM lab and the school needs more funding to help realize it's dream. If any of you would like to support the school financially or volunteer to help please feel free contact myself or Principal Johansen:

Principal Michelle Johansen
Campbell STEM Elementary
johansen_michelle@asdk12.org
(907) 742-5560 or 5570

I believe this is a great opportunity to get children more involved in STEM learning which hopefully one day, will lead them to be ASHRAE members. For more information on Campbell STEM, I have provided the following links as well as September's Principal Newsletter and donation form:

Proposal to ASD: [http://www.boarddocs.com/ak/asdk12/Board.nsf/files/ALCPNM614CD7/\\$file/M158_Campbell%20STEM%20proposal.pdf](http://www.boarddocs.com/ak/asdk12/Board.nsf/files/ALCPNM614CD7/$file/M158_Campbell%20STEM%20proposal.pdf)

ADN Article: <https://www.adn.com/alaska-news/education/2017/05/14/an-anchorage-school-is-about-to-become-the-citys-first-stem-elementary/>

Alaska Business Article: <http://www.akbizmag.com/Education/Campbell-Elementary-Becomes-STEM-School/>

Anchorage Park Foundation: <http://anchorageparkfoundation.org/programs/schools-trails/school-challenge-grants/campbell-elementary-school/>

Thank you all for your time and assistance in ASHRAE and hope to see you all at the meetings.

Brian Johnson
ASHRAE Alaska Chapter SAC
(907) 382-7447 or rbj13@me.com

A Message from the Principal...

Dear Campbell Community,

What a fantastic start to a very special school year! Campbell STEM is now the first STEM elementary school in Anchorage!

We are very proud and excited about our unique alternative STEM school, and we truly appreciate any support you can give to support our goals. If you can help out with fieldtrips, projects, or as a guest speaker on STEM career days, please let your child's teacher or the office know.

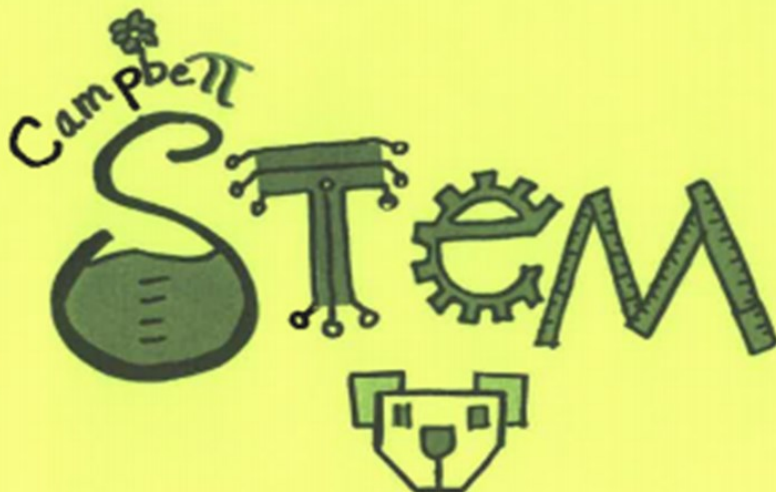
At our Open House this past Tuesday, we introduced a "Support Our Students in the STEM Lab" fundraiser in hopes that families and businesses will help support the purchase of items needed for our new lab. If possible, you can purchase a lab stool for \$75 and have your family's name engraved on a plaque that will be affixed to the chair. Of course, we will appreciate donations of any amount. Donations of \$25 and above will be recognized with your family or business name displayed on a bulletin board in the STEM Lab. A form for donations is included in this newsletter.

Please be extra careful whenever driving through our parking lot. Both parking lots are one-way streets, with traffic moving to the right only. The speed limit is 5 mph. Please drive cautiously and pull all the way over to the curb and stop before signaling for your child to come to the car. Children are not allowed to walk across the parking lot for any reason, so if you cannot pull directly up to the curb, please park your car and walk to the sidewalk to pick up your student. Thank you for keeping our students safe!

Our mission here at Campbell STEM is: To prepare our diverse students for 21st Century citizenship and instill a joy of discovery, through integrative STEM learning, real world problem solving, and a caring environment. If you have questions about your child's class, be sure to speak with the teacher first in order to obtain the most accurate information. If you still have questions after speaking with the teacher, please feel free to contact me. My door is always open for you!

Sincerely,

Michelle Johansen



"Where Campbell Cubs do GREAT things!"

STEM Lab Donation

As we work to build our STEM lab, your donation will help to ensure we have the resources to encourage innovation, creativity, and a love of learning.

Name(s) _____
 Company _____
 Phone Number _____

Description	Donation Amount
Donation of \$25 or more: With any donation of \$25 or more you will be recognized in our STEM lab as a donor.	\$
Donation of \$75 or more: These donations will go toward seating for our new STEM lab! Pay to buy a new stool for our lab and have your name(s) engraved on a name placard which will be placed on a stool in the lab!	\$
Please clearly write your name below as you'd like it to appear:	Total: \$

Donated by

Examples:

Donated by
John Smith

Donated by
The Smith Family

Make all checks payable to Campbell STEM Elementary.

Thank you for your contribution!

ASHRAE Scholarship:



2017 Scholarship Donation Drive

Join us in our efforts as we raise funds to support our

ASHRAE Alaska Chapter Student Scholarship



The Alaska Chapter of ASHRAE is seeking donations from our members and community in setting up a UAA scholarship and student activities fund to support young engineers in Alaska.

Please consider donating now and in the future to help get this scholarship off the ground. All funds designated for the scholarship/student account will be tracked separately of Chapter dues and RP donations.

If you or your company is interested in donating please contact Tracy McKeon at akashraetreasurer@gmail.com

Volunteer with Us! We Need Your help!

ASHRAE Volunteer Opportunities:

We currently have an open volunteer position that needs to be filled. Whether you are new to ASHRAE or have been a member of ASHRAE for years you Chapter needs you help. Volunteering at the chapter level helps you develop a better understanding of how the Society functions and how to receive the most benefit from your membership while contributing to the growth of ASHRAE.

Volunteering only takes a couple of hours a month. If you are interested we need to fill the:

- ◆ Electronics Communications Chair

For more information on how to volunteer contact Craig Rohwer, President, Alaska Chapter ASHRAE, at craig.rohwer@irco.com

Save the Date:

Next ASHRAE Meeting:
Thursday October 19th, 2017 5:30 -7:00 pm
Topics: Oil Field HVAC Infrastructure / East High Robotics



RSA Engineering, Inc.
MECHANICAL AND ELECTRICAL CONSULTING ENGINEERS

Mechanical & Electrical planning, design, construction administration, commissioning, and sustainable compliance for the Anchorage Museum at Rasmuson Center Expansion Project
www.rsa-ak.com ♦ 907-276-0521 ♦ info@rsa-ak.com

Russel "Rusty" West
Alaska Sales Manager

Office: 425-774-6602
Direct Line: 425-977-2139
Mobile: 206-909-3664
Fax: 425-775-2272



Email: rwest@coleindust.com

5924 - 203rd Street Southwest • Lynnwood • WA • 98036
Serving the Pacific Northwest for over 40 years

Simplify...

Find all of your Architecture, Engineering, and Survey services in one place

Design Alaska

Since 1957

mail@designalaska.com www.designalaska.com
1-800-668-8919 1-907-452-1241

MBA Consulting Engineers, Inc.

3812 Spenard Road, Suite 200 • Anchorage, AK 99517
(907) 274-2622 • FAX (907) 274-0914



MBA Consulting Engineers, Inc. is dedicated to providing mechanical and electrical designs for safe, comfortable and convenient building systems, within budget, and with minimum operating and maintenance costs.

Jessi Cherry
Sales Specialist
LEED-Green Associate

907-279-3320
907-317-8187
jcherry@msicontrols.com
www.msicontrols.com

An Employee Owned Company

Cody Moore
Outside Sales Engineer
907.202.3916 Mobile
907.562.6940 Office
907.562.6939 Fax
CodyM@mechanicalsales.com

Mechanical Sales, INC.

COFFMAN ENGINEERS

Mechanical • Commissioning • Energy Management • Electrical • Civil
Fire Protection • Structural • Corrosion Control • PM/CM

Anchorage | Bozeman | Guam | Honolulu | Los Angeles | Oakland | Seattle | Spokane
800 F Street | Anchorage, Alaska 99501
ph 907.276.6664

www.coffman.com

STINEBAUGH & COMPANY

Engineered HVAC Solutions

Call us at 907.345.8021
www.stinebaugh.com
5730 B Street • Anchorage, Alaska 99518



 <p>CRW ENGINEERING GROUP, LLC</p> <p>Civil · Mechanical · Electrical · Structural Environmental · Land Surveying</p> <hr/> <p>Bright People. Powerful Solutions. Building Alaska.</p> <p>Anchorage Palmer (907) 562-3252 Fax (907) 561-2273 www.crweng.com</p>	 <p>JERNSTROM ENGINEERING</p> <p>CONSULTING MECHANICAL ENGINEERS</p> <p>6927 Old Seward Hwy, Suite 202 Anchorage, AK 99518 Phone: (907) 522-1042 www.jernstromengineering.com</p>
 <p>Scott Smith</p> <p>337 E. 4th Avenue #66 Anchorage, AK 99501 Email: scott.smith@victaulic.com Cell: 907/223-0261</p>	 <p>AMC ENGINEERS</p> <p>High Performance Building Systems amc-engineers.com</p>
 <p>AARON PLUMBING & HEATING COMPANY</p> <p>Tom Fisher President</p> <p>Email: tomfisher@aaronak.com</p> <hr/> <p>2143 Standard Avenue Fairbanks, Alaska 99701 website: www.aaronak.com</p> <p>Phone: 907-452-3463 Mobile: 907-378-2804 Fax: 907-456-1315</p>	

This page will be continually updated. Please get your business card in for the year of 2017-2018. Business cards run from Sept to Sept for \$100.00 per year. Please send your photo-ready card to tmckeon@crweng.com